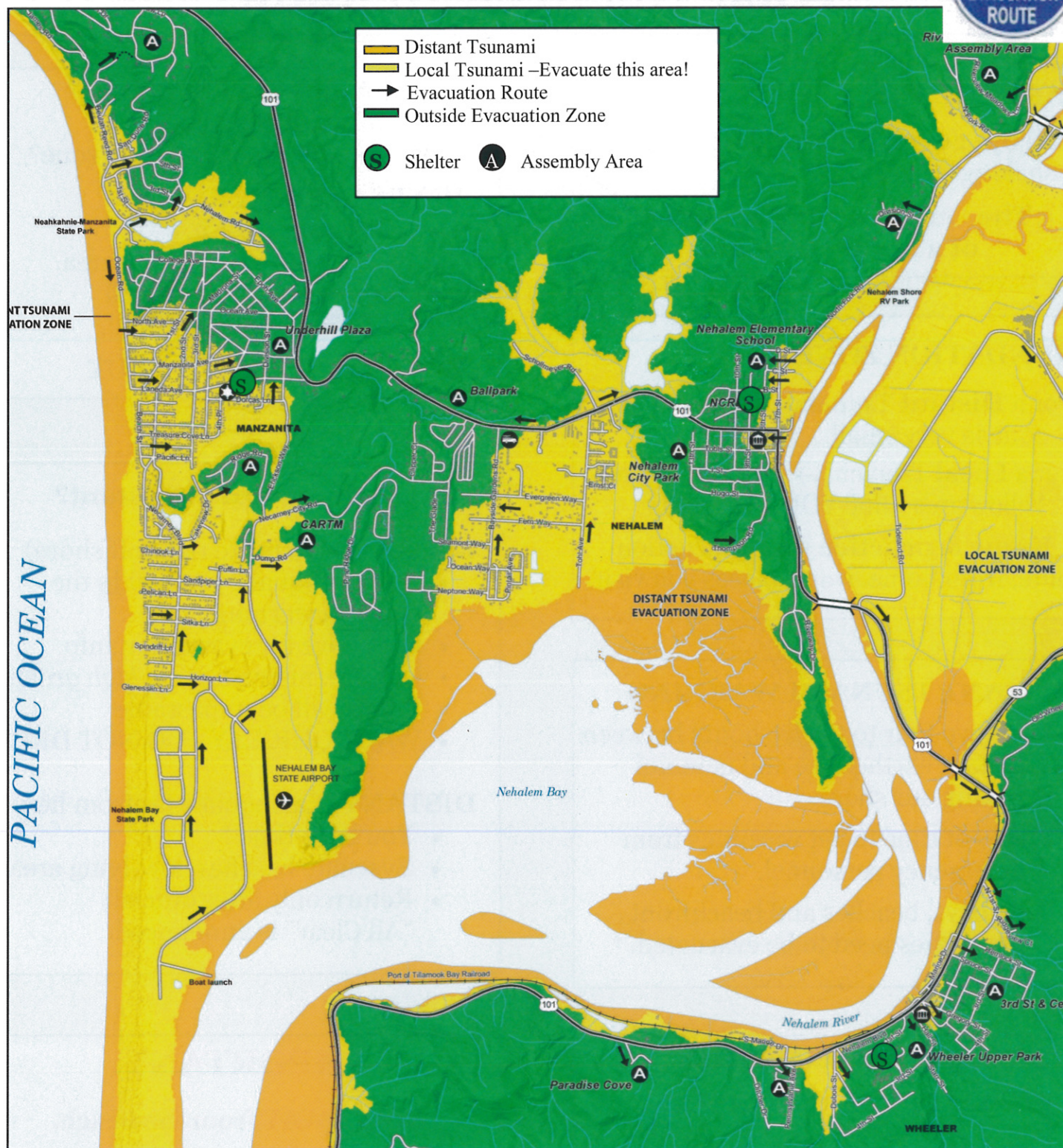


# Tsunami Inundation Zone Map

Nehalem Bay Area, Tillamook County OR



**Assembly sites** have emergency personnel with information. Know the one near you. **Shelter Locations** with warmth, water & electricity (generators), First Aid, food and sleeping areas are opened only when needed. Locations are:

Manzanita: Calvary Bible Church, 560 Laneda Ave.

Nehalem: North County Recreation District (NCRD) 36155 9th St.

Wheeler: Nehalem Bay Health District, 278 Rowe St.

#### Medical Clinics:

Rinehart Clinic, 230 Rowe St., Wheeler 503-368-5182

Adventist Clinic, 10445 Neahkahnie Creek Rd., Manzanita 503-368-6244

**Map Your Neighborhood Gathering Sites** are specific to each neighborhood.

Contact your Neighborhood Captain for locations.



# EARTHQUAKES AND TSUNAMIS

## What You Need To Know

### EARTHQUAKE

**Drop, cover, and hold** on until the shaking stops.

The **Quake** is your warning  
of a **Local** Tsunami!

### INUNDATION ZONE

For a **Distant** Tsunami, the inundation zone is very small.

For a **Local** Tsunami → map on reverse, Yellow area - find YOUR Location.

**Know & practice** your evacuation route, from home, work, places you visit.

### DISTANT TSUNAMI WARNING

- ➡ You have four to twelve hours between distant earthquake and tsunami hitting our shore.
- ➡ Plenty of time to get warnings from emergency personnel.
- ➡ Only bays, beaches and beachfront properties need to be evacuated. \*

### NEWS AND INFORMATION

- KTCB / KMUN 89.5 / 91.1 FM
- Emergency Public Info 503-368-2050
- NOAA Weather Radio \*
- Emergency Volunteer Corps website: [www.evcnb.org](http://www.evcnb.org)
- Sign up for Reverse 911 on your cell phone, receive text message warnings \*
- Facebook: [www.facebook.com/evcnb](http://www.facebook.com/evcnb)

### EVACUATE – Do I or don't I?

- ➡ Is building unsafe?
- ➡ Am I in the inundation zone?

#### IF YES to EITHER –

- Grab your Go-Kit. \*
- Go to nearest assembly area.
- Return only after official “All Clear” is announced.

#### IF NO to BOTH, STAY PUT

### TSUNAMI – Local or Distant?

#### LOCAL (Earthquake right off shore)

- The earthquake you feel is the tsunami warning
- See above for evacuation info
- Only few minutes, *go to high ground*
- Roads will be impassable
- WALK QUICKLY - DO NOT DRIVE

#### DISTANT (Earthquake far from here)

- You have time !
- Evacuate beaches, low-lying areas
- Return only after official “All Clear” is announced

### IMPORTANT!

**STAY AWAY from the Beach.**  
**Tsunami surges are MULTIPLE.**  
**Surges continue for HOURS.**  
**Surges may get BIGGER OVER TIME.**

\* For more information on how to prepare, visit the Emergency Volunteer Corps website: [www.evcnb.org](http://www.evcnb.org)