

PACIFIC DUNES UNIT NO. 8

SE 1/4, SECTION 29, T3N, R10W, W.M.
CITY OF MANZANITA, TILLAMOOK COUNTY, OREGON

AUGUST 17, 2020

MONUMENT NOTES

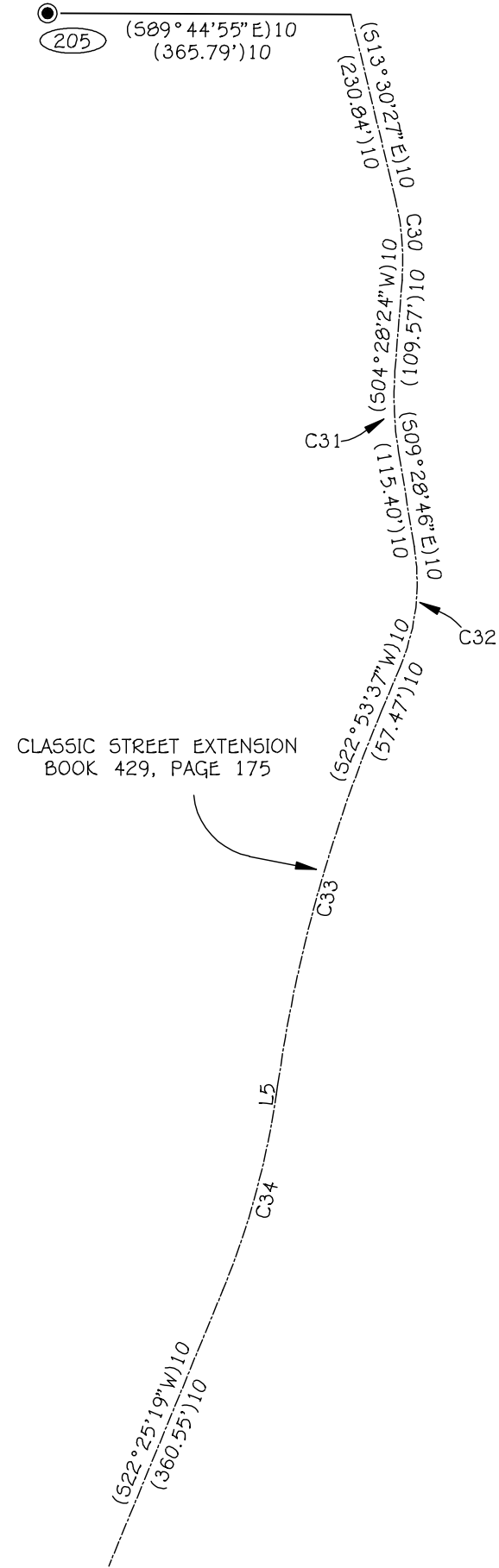
- (201) FOUND 3" TILLAMOOK COUNTY SURVEYOR BRASS DISK IN CONCRETE STAMPED "1/4 529 528 R5793 1970". SEE REWITNESS BIN #145, TILLAMOOK COUNTY SURVEY RECORDS.
- (205) FOUND 3" TILLAMOOK COUNTY SURVEYOR BRASS DISK IN CONCRETE STAMPED "RESET LS 49230 E 1/16 C-C 529 R5793 1970" AT NORTHEAST QUADRANT OF DIVISION STREET AND DORCAS LANE. SEE MAP A-7948, TILLAMOOK COUNTY SURVEY RECORDS.
- (208) FOUND 5/8" REBAR WITH PLASTIC CAP STAMPED "LS 475" 0.1' BELOW GROUND. HELD AS AN ORIGINAL MONUMENT FROM MAP C-487, TILLAMOOK COUNTY SURVEY RECORDS.
- (210) FOUND 5/8" REBAR WITH PLASTIC CAP STAMPED "LS 475" 0.1' BELOW GROUND. HELD AS AN ORIGINAL MONUMENT FROM MAP C-487, TILLAMOOK COUNTY SURVEY RECORDS.
- (224) FOUND 5/8" REBAR WITH PLASTIC CAP STAMPED "TERRY JONES LS 2507" 0.1' ABOVE GROUND. HELD AS AN ORIGINAL MONUMENT FROM MAP C-535, TILLAMOOK COUNTY SURVEY RECORDS.
- (233) FOUND 5/8" REBAR WITH PLASTIC CAP STAMPED "TERRY JONES LS 2507" 0.2' ABOVE GROUND. HELD AS AN ORIGINAL MONUMENT FROM MAP C-535, TILLAMOOK COUNTY SURVEY RECORDS.
- (234) FOUND 5/8" REBAR WITH PLASTIC CAP STAMPED "TERRY JONES LS 2507" 0.1' ABOVE GROUND. HELD FOR LINE AS AN ORIGINAL MONUMENT FROM MAP C-535, TILLAMOOK COUNTY SURVEY RECORDS. NORTH 21°07'35" EAST 0.11' FROM CALCULATED NORTHEAST CORNER.
- (252) FOUND 5/8" REBAR WITH PLASTIC CAP STAMPED "TILLAMOOK CO SURVEY" FLUSH IN GROUND. HELD FOR RIGHT-OF-WAY. SEE MAP B-3594, TILLAMOOK COUNTY SURVEY RECORDS.
- (253) FOUND 5/8" REBAR WITH PLASTIC CAP STAMPED "TILLAMOOK CO SURVEY" 0.4' BELOW GROUND. HELD FOR RIGHT-OF-WAY. SEE MAP B-3594, TILLAMOOK COUNTY SURVEY RECORDS.
- (259) FOUND 5/8" REBAR FLUSH IN GROUND. HELD AS AN ORIGINAL MONUMENT FROM MAP C-487, TILLAMOOK COUNTY SURVEY RECORDS.
- (261) FOUND 3" TILLAMOOK COUNTY SURVEYOR BRASS DISK IN CONCRETE STAMPED "529 528 533 532 R5793 1969". SEE REWITNESS BIN #151, TILLAMOOK COUNTY SURVEY RECORDS.
- (262) FOUND 5/8" REBAR WITH PLASTIC CAP STAMPED "TILLAMOOK CO SURVEY" 0.4' BELOW GROUND. HELD FOR RIGHT-OF-WAY. SEE MAP B-3594, TILLAMOOK COUNTY SURVEY RECORDS.
- (263) FOUND 5/8" REBAR WITH PLASTIC CAP STAMPED "TILLAMOOK CO SURVEY" 0.4' BELOW GROUND. HELD FOR RIGHT-OF-WAY. SEE MAP B-3594, TILLAMOOK COUNTY SURVEY RECORDS.
- (537) FOUND 5/8" REBAR PLASTIC CAP STAMPED "ONION PEAK DESIGN" FLUSH IN GROUND. HELD AS AN ORIGINAL MONUMENT FROM MAP B-3646, TILLAMOOK COUNTY SURVEY RECORDS.
- (542) FOUND 5/8" REBAR PLASTIC CAP STAMPED "ONION PEAK DESIGN" FLUSH IN GROUND. HELD AS AN ORIGINAL MONUMENT FROM MAP B-3646, TILLAMOOK COUNTY SURVEY RECORDS.

LINE TABLE		
LINE	BEARING	LENGTH
(L1)11	S08°04'06"W	11.14'
L1	S08°04'06"W	11.14'
(L2)11	S22°25'19"W	52.36'
L2	S22°25'19"W	52.36'
L3	S05°54'24"E	50.46'
L4	S34°05'32"E	24.99'
L5	S30°56'16"E	28.21'
L6	S86°32'34"W	13.27'
L7	S41°52'49"E	18.79'
L8	S41°52'49"E	39.40'
L9	S27°49'56"W	21.14'
L10	S12°55'38"W	10.19'
L11	S27°49'56"W	25.00'
L12	N62°10'04"W	20.00'
L13	N62°10'04"W	20.00'
L14	S23°06'23"E	9.64'
(L15)11	N05°54'24"W	3.40'
L15	N05°54'24"W	3.40'
L16	N31°56'42"W	13.01'
L17	S62°10'04"E	38.50'
L18	N27°49'56"E	27.00'
L19	N62°10'04"W	38.50'
L20	S27°49'56"W	40.00'

LOT AREAS	
LOT	AREA
1	8,873 SQ. FT.
2	7,846 SQ. FT.
3	7,958 SQ. FT.
4	8,157 SQ. FT.
5	7,150 SQ. FT.
6	7,150 SQ. FT.
7	7,150 SQ. FT.
8	7,150 SQ. FT.
9	7,150 SQ. FT.
10	7,113 SQ. FT.
11	5,969 SQ. FT.
12	5,200 SQ. FT.
13	5,200 SQ. FT.
14	5,200 SQ. FT.
15	5,200 SQ. FT.
16	5,200 SQ. FT.

CURVE TABLE					
CURVE	RADIUS	LENGTH	DELTA	CH. BEARING	CH. LENGTH
C1	283.00'	84.01'	17°00'27"	N14°23'23"E	83.70'
C2	1800.00'	465.75'	14°49'31"	S15°28'52"W	464.45'
(C3)11	1000.00'	250.52'	14°21'13"	N15°14'43"E	249.86'
C3	1000.00'	250.52'	14°21'13"	N15°14'43"E	249.86'
(C4)11	220.00'	33.87'	8°49'12"	N10°24'59"W	33.83'
C4	220.00'	33.87'	8°49'12"	N10°24'59"W	33.83'
C5	150.00'	133.16'	50°51'46"	N61°06'41"E	128.83'
C6	350.00'	75.99'	12°26'22"	S41°54'00"W	75.84'
C7	150.00'	182.51'	69°42'45"	S07°01'27"E	171.46'
C8	1000.00'	46.94'	2°41'23"	N12°39'04"E	46.94'
C9	1000.00'	35.14'	2°00'49"	N15°00'10"E	35.14'
C10	20.00'	36.57'	104°45'49"	S41°04'31"E	31.68'
C11	20.00'	24.62'	70°31'59"	S51°16'35"W	23.10'
C12	130.00'	115.40'	50°51'46"	N61°06'41"E	111.65'
C13	170.00'	150.91'	50°51'46"	N61°06'41"E	146.01'
C14	370.00'	60.32'	9°20'28"	S40°21'03"W	60.26'
C15	330.00'	91.66'	15°54'51"	S43°38'14"W	91.36'
C16	170.00'	16.55'	5°34'40"	S38°51'58"E	16.54'
C17	170.00'	50.22'	16°55'32"	S27°36'52"E	50.04'
C18	170.00'	50.18'	16°54'47"	S10°41'42"E	50.00'
C19	170.00'	50.18'	16°54'47"	S06°13'05"W	50.00'
C20	170.00'	39.04'	13°09'28"	S21°15'12"W	38.95'
C21	130.00'	35.57'	15°40'39"	S34°02'29"E	35.46'
C22	130.00'	102.65'	45°14'23"	S03°34'58"E	100.00'
C23	130.00'	19.96'	8°47'43"	S23°26'04"W	19.94'
C24	30.00'	26.69'	50°58'55"	S06°27'14"E	25.82'
C25	30.00'	4.61'	8°47'43"	S23°26'04"W	4.60'
(C26)6	122.45'	176.05'	82°22'44"	N64°04'38"W	161.27'
C26	122.45'	176.04'	82°22'44"	N64°17'35"W	161.28'
C27	15.00'	15.65'	59°46'39"	N02°03'23"W	14.95'
C28	6.50'	10.21'	90°00'00"	N72°49'56"E	9.19'
C29	6.50'	10.21'	90°00'00"	N17°10'04"W	9.19'
(C30)10	310.00'	97.29'	17°58'51"	N04°31'02"W	96.89'
(C31)10	405.00'	98.63'	13°57'10"	S02°30'11"E	98.38'
(C32)10	263.00'	148.60'	32°22'23"	S06°42'25"W	146.63'
(C33)10	1820.00'	470.92'	14°49'31"	S15°28'51"W	469.61'
(C34)10	980.00'	245.51'	14°21'13"	N15°14'43"E	244.87'
C35	1000.00'	111.92'	6°24'44"	N19°12'57"E	111.86'

RADIAL TABLE		
CURVE	END	BEARING TO RADIUS
C1	NORTH	N84°06'50"W
C4	NORTH	S75°10'26"W
C4	SOUTH	S83°59'37"W
C26	NORTH	S15°28'57"E
C26	SOUTH	S66°53'27"W



CLASSIC STREET EXTENSION
CENTERLINE DETAIL
1" = 200'

REGISTERED
PROFESSIONAL
LAND SURVEYOR

Eric M White

OREGON
APRIL 28, 2014
ERICK M. WHITE
78572

RENEWS 6/30/2022

THIS MAP IS TEMPORARY AND IS A TILLAMOOK
COUNTY SURVEYOR REVIEW COPY ONLY.

SHEET 3 OF 4
ONION PEAK DESIGN
PO BOX 326
NEHALEM, OR 97131
(503) 368-6102
FAX (503) 368-6102
ENCORE2007-5.DWG ENCORE.CQX #A2018