

J.B. CEREGHINO CONST., INC.
13931 SE MATILDA DR
MILWAUKEE, OREGON 97267
PH: (541) 480-0829
FAX: (541) 480-0829

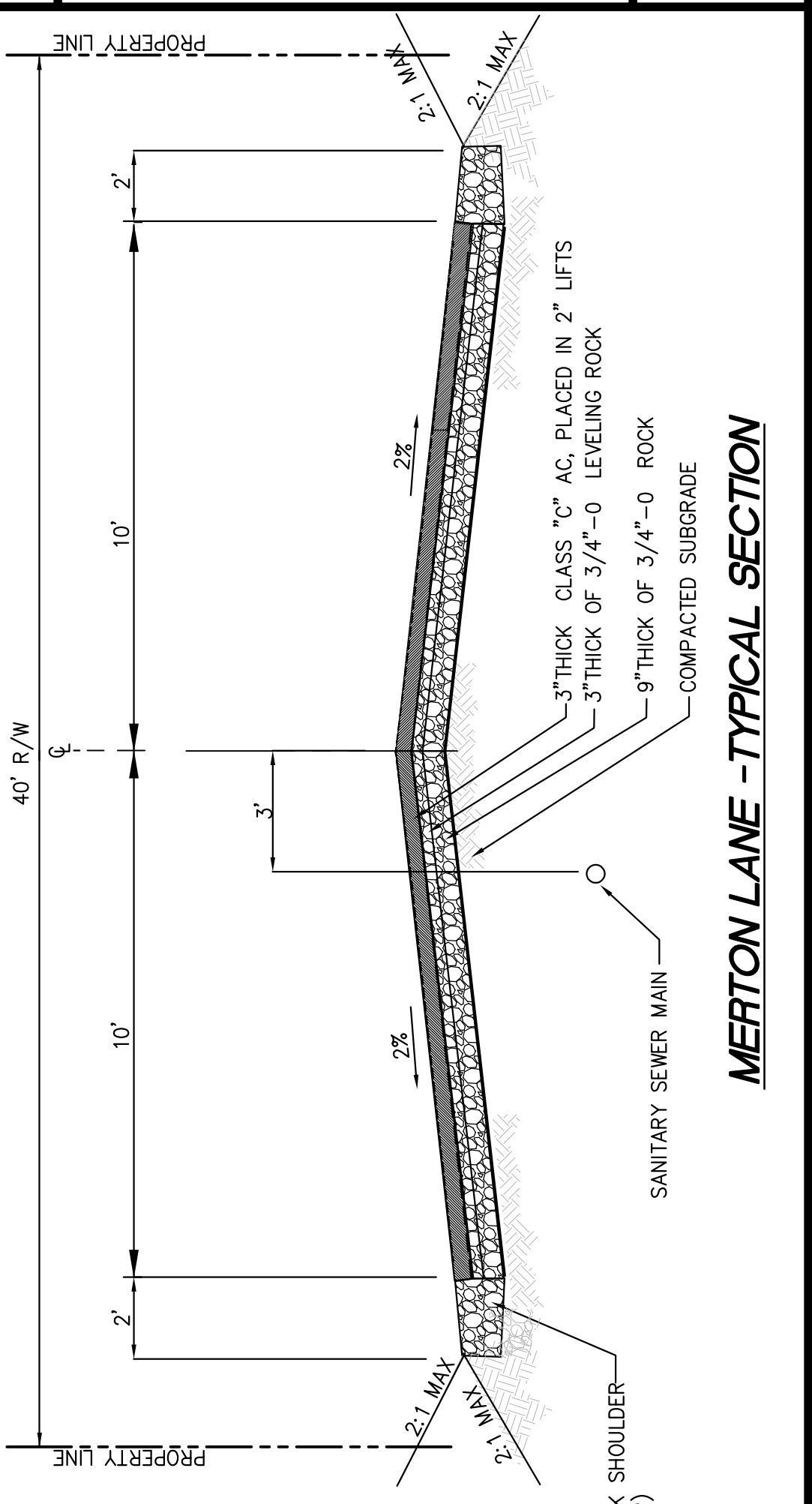
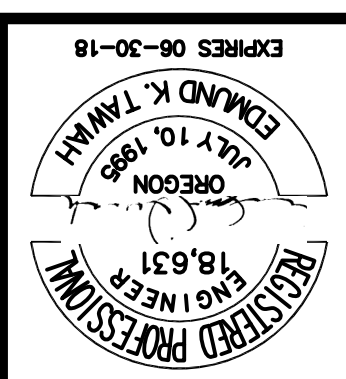


TCC ASSOCIATES INC.
PROJECT MANAGEMENT
5821 SE 82ND AVE
Portland, OR 97266
Phone (503) 277-8143
Fax: (503) 262-8668
Email: jeekay@tccassoc.com

DESIGNED	ET
CHECKED	WC
DATE	02-16-21

NO.	REVISIONS	DATE

DRAWING TITLE: STREET & GRADING
MERTON LANE
PROJECT: MERTON LN SUBDIVISION
DEVELOP'D LOT MERTON LN
PORTLAND, OREGON 97233
T.L. 100, T3N R10W SEC 29CA
TILLAMOOK COUNTY

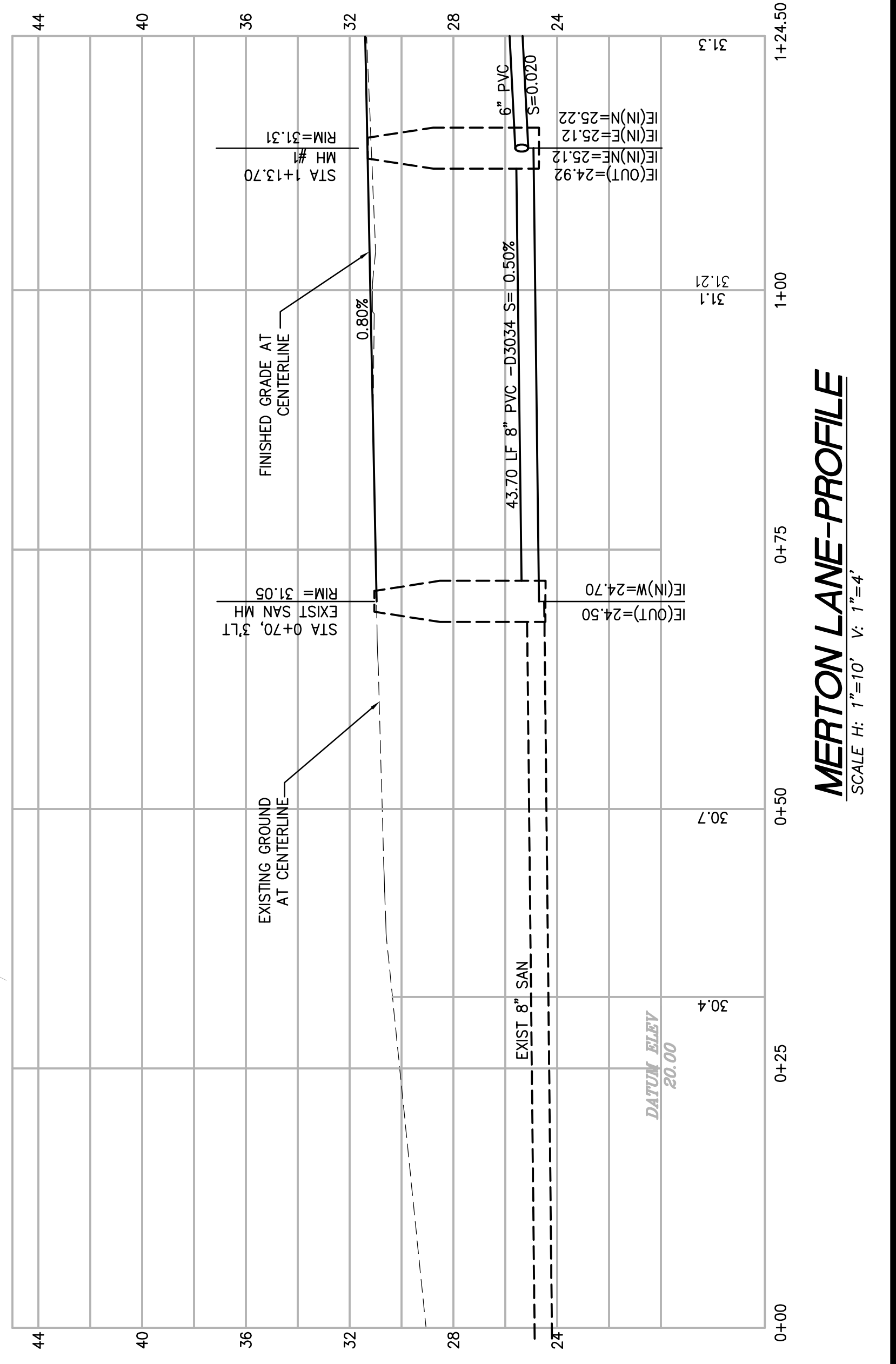


CURVE TABLE

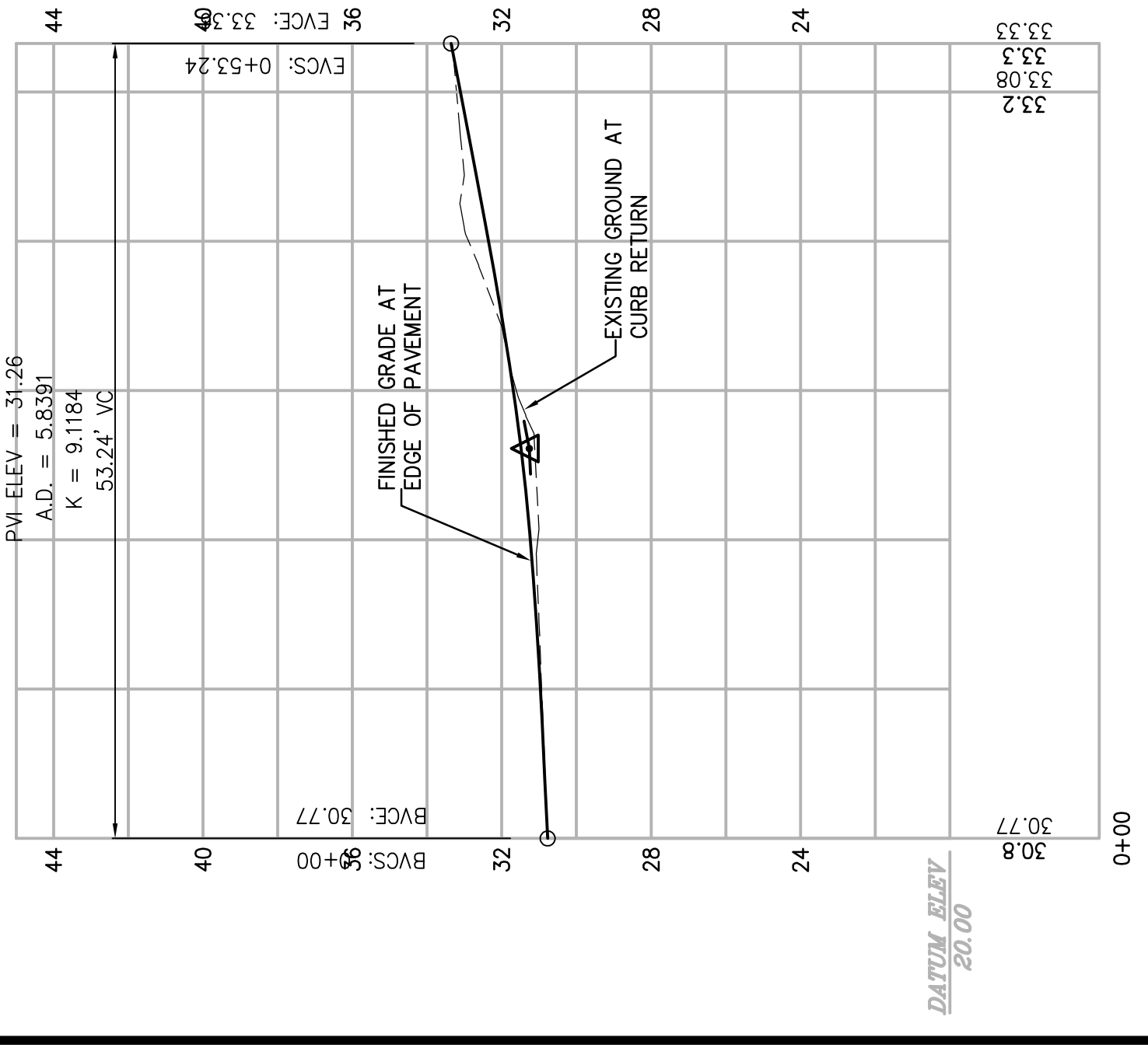
CURVE	LENGTH	RADIUS	DELTA ANGLE	CHORD DIRECTION
STA 0+81.22, 10'LT PC	(C1)	38.06	25.00	87°11'07" N44°36'06"E
STA 0+81.22, 10'RT PC	(C2)	38.98	25.00	89°08'57" N47°53'13"W

LINE TABLE

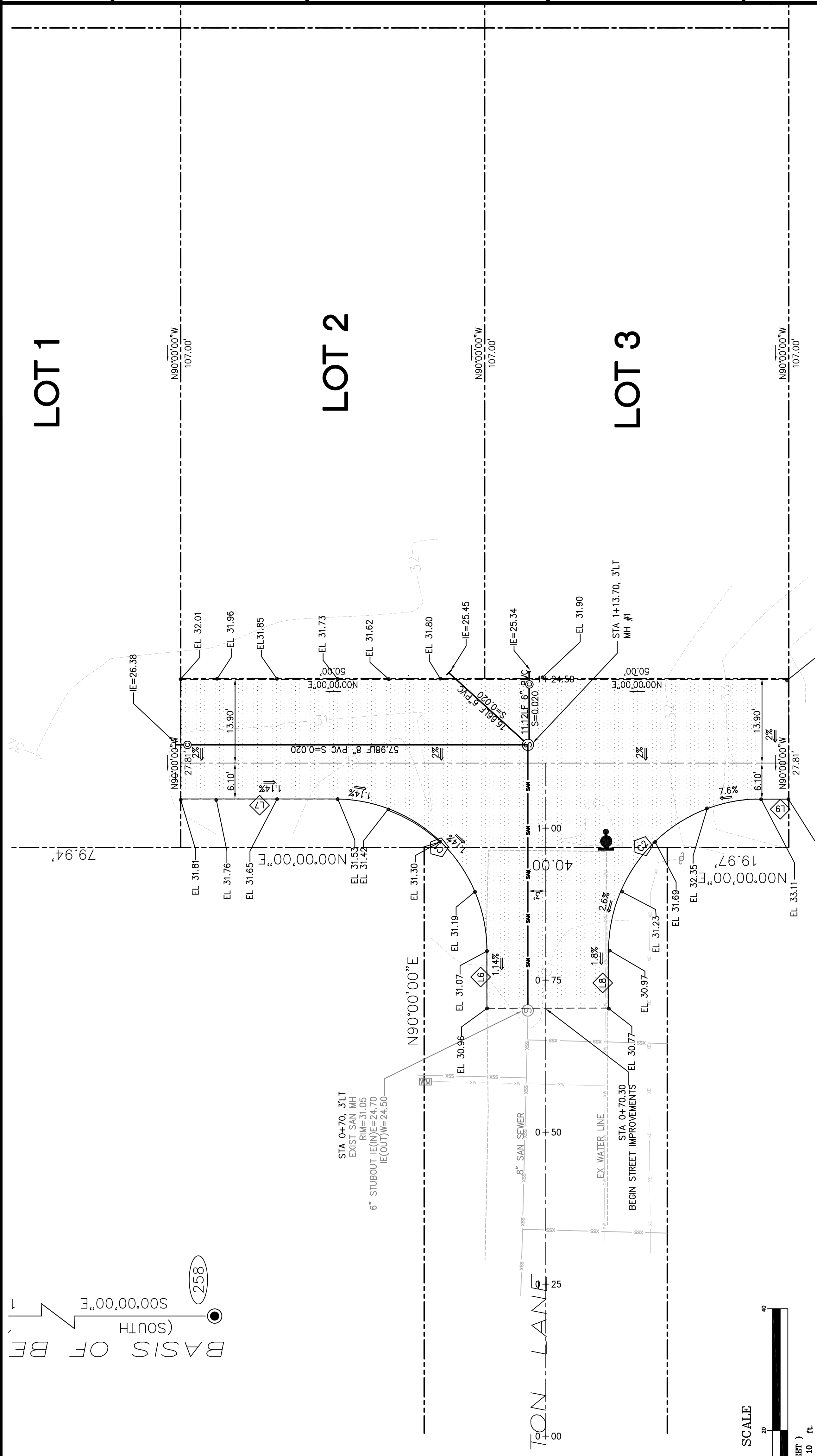
LINE	LENGTH	BEARING
(C1)	10.16	N80°00'00"E
(C2)	25.79	N00°00'00"E
(C3)	8.30	N80°00'00"E
(C4)	5.97	S00°00'00"E



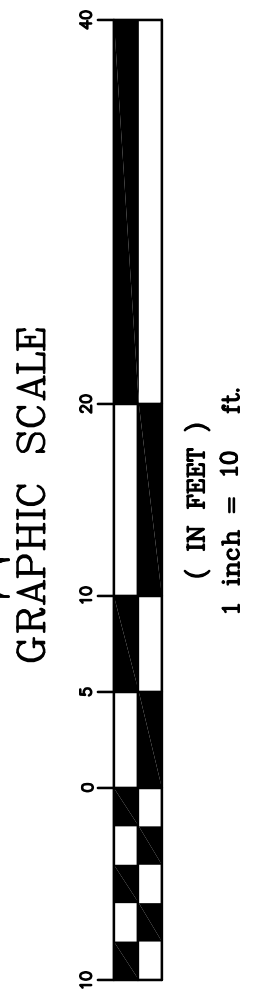
CURB RETURN C2 - PROFILE
SCALE: H: 1"=10' V: 1"=4'



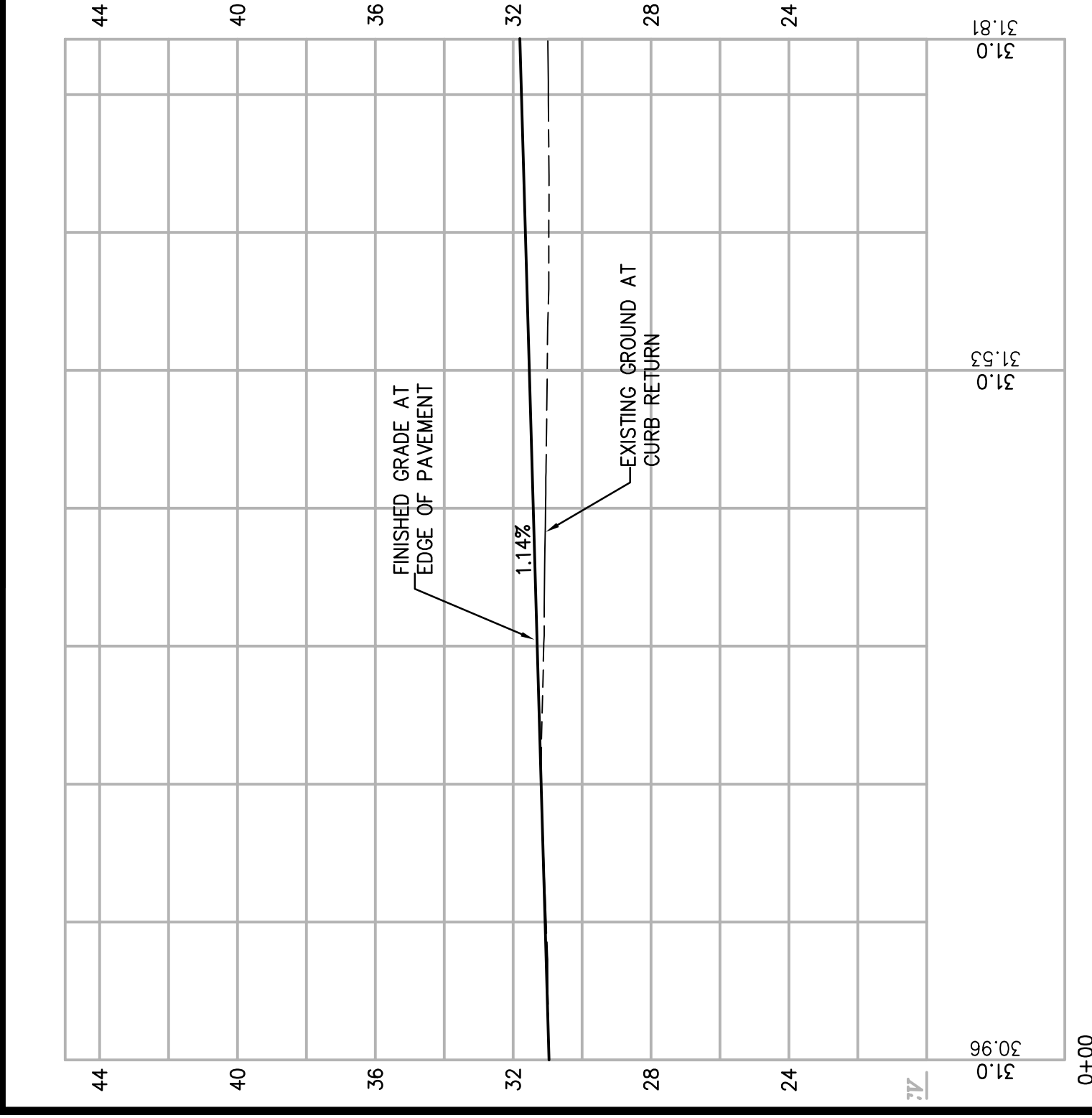
PVI STA = 0+26.11
PVI-ELEV = 31.26
A.D. = 5.8381
K = 9.1184
53.24' VC



MERTON LANE - PLAN
SCALE: 1"=10'



CURB RETURN C1 - PROFILE
SCALE: H: 1"=10' V: 1"=4'



BASIS OF BEARING (SOUTH)
S00°00'00"E
258