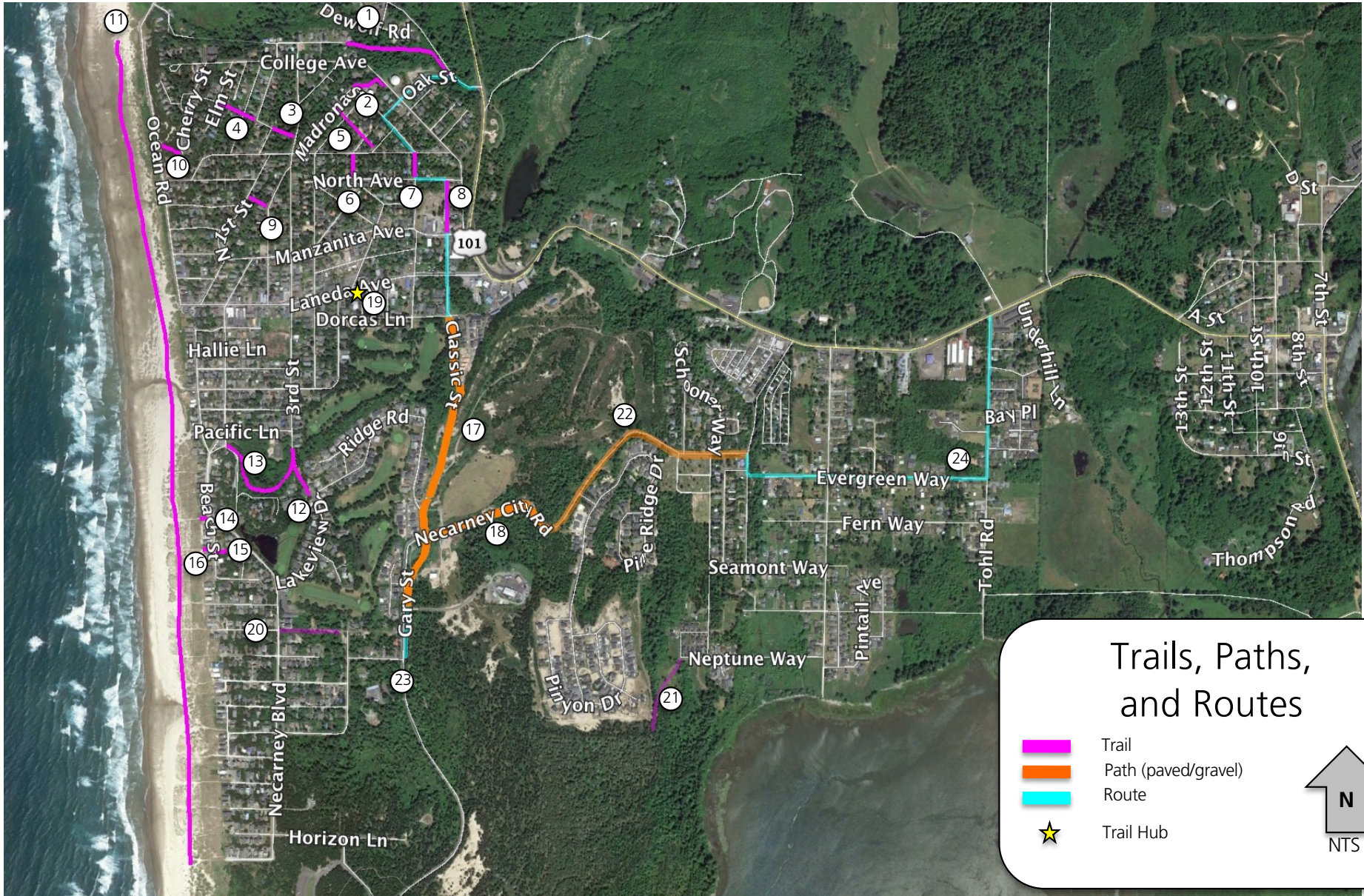


City of Manzanita

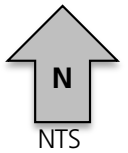
Trail Master Plan – Map (Appendix A)

Spring 2021



Trails, Paths, and Routes

- Trail
- Path (paved/gravel)
- Route
- ★ Trail Hub



City of Manzanita

Trail Master Plan – Matrix (Appendix B)

Spring 2021

Ref #	Trail Name	Color	Type	Length (LF)	Access	City Limits	Notes
1	University Avenue - Nehalem Road	Magenta	Trail	1,400	City property	IN	Connects University Avenue and Oak Street.
2	Water Tower		Trail	400	City property	IN	Connects Madrona Street/Poysky Avenue with College Avenue.
3	High Street - Upper		Trail	300	ROW	IN	Connects Third Street with High Avenue.
4	High Street - Lower		Trail	460	ROW	IN	Connects Elm Street with High Avenue.
5	Trees Streets		Trail	700	ROW	IN	Connects Madrona, Nutmeg, Oak, and Popular Streets.
6	Fourth Place		Trail	300	ROW	IN	Connects Ocean Avenue and North Avenue.
7	Division Street		Trail	300	ROW	IN	Connects Ocean Avenue and North Avenue. Existing improvements currently facilitate pedestrian access.
8	Classic Street - North		Trail	600	ROW	IN	Connects Manzanita Avenue and North Avenue.
9	First - Second Street		Trail	300	ROW	IN	Connects First Street and Second Street.
10	Cherry Street Trail		Trail	300	ROW/easement	IN	Connects Cherry Street with Ocean Road. Exact alignment to be determined through detailed design process; may include ROW and/or private land.
11	Oregon Coast Trail (OCT) - 2021 primary alignment		Trail	N/A	State lands	OUT	Beach portion in front of Manzanita. Current official alignment.
12	Third Street		Trail	600	Easement	IN	Connects Third Street with Lakeview Drive.
13	Manzanita City Park		Trail	1,400	Public lands	IN	Connects Third Street with Carmel Avenue.
14	Beach Street - North		Trail	100	ROW	IN	Connects Beach Street/Sunset Lane to the beach.
15	Beach Circle		Trail	200	ROW	IN	Connects Beach Circle to the beach.
16	Beach Street - South		Trail	125	ROW	IN	Connects Beach Street to the beach.
17	Classic Street - South	Orange	Path	3,600	Easement, ROW	IN	Separated bicycle and pedestrian facility along Classic Street between Dorcas Lane and Dump Road. Easementsand/or land swaps will be needed.
18	Necarney City Road	Orange	Path	1,700	ROW	IN	Separated bicycle and pedestrian facility along Necarney Road between Classic Street and eastern boundary of city limits.
19	Trail Hub	Yellow	N/A	N/A	Public lands	IN	Centralized hub for trail information, meeting spot, and restrooms.
20	Puffin Lane - UGB	Dark Purple	Trail	700	ROW	OUT	Connects Necarney Boulevard and Puffin Lane.
21	Neptune - UGB	Dark Purple	Trail	900	ROW	OUT	Connects Neptune Way with Nehalem Bay State Park.
22	Necarney City Road - UGB	Orange	Path	3,100	ROW	OUT	Extends separated bicycle and pedestrian facility from eastern city limits to eastern Urban Growth Boundary. Easementsand/or land swaps will be needed.
23	Oregon Coast Trail (OCT) - proposed	Light Blue Dotted	Route	N/A	ROW	IN/OUT	Proposed realignment of OCT through Manzanita with more direct access to Nehalem Bay State Park. Signs to direct people through town, past new city hall, to trailhead and services on Laneda, and along Classic Street pathway. To be developed once Classic Street pathway is completed through to State Park.
24	Connection to Salmonberry Trail - proposed	Light Blue Dotted	Route	N/A	ROW	IN/OUT	Future connection to Highway 101 to access the Salmonberry Trail in Wheeler.