

COVID-19 IN TILLAMOOK COUNTY

As of 8/4/2021

Presented by Margaret Steele, MD (ret)

OREGON'S EPI CURVE

Oregon's Epi Curve

COVID-19 Testing by County

COVID-19 Testing Over Time

Oregon's Epi Curve: COVID-19 cases

This chart shows the number of Oregonians who have been identified as COVID-19 cases and whether they were ever hospitalized for their illness.†

Total Cases

223,364

Hospitalized

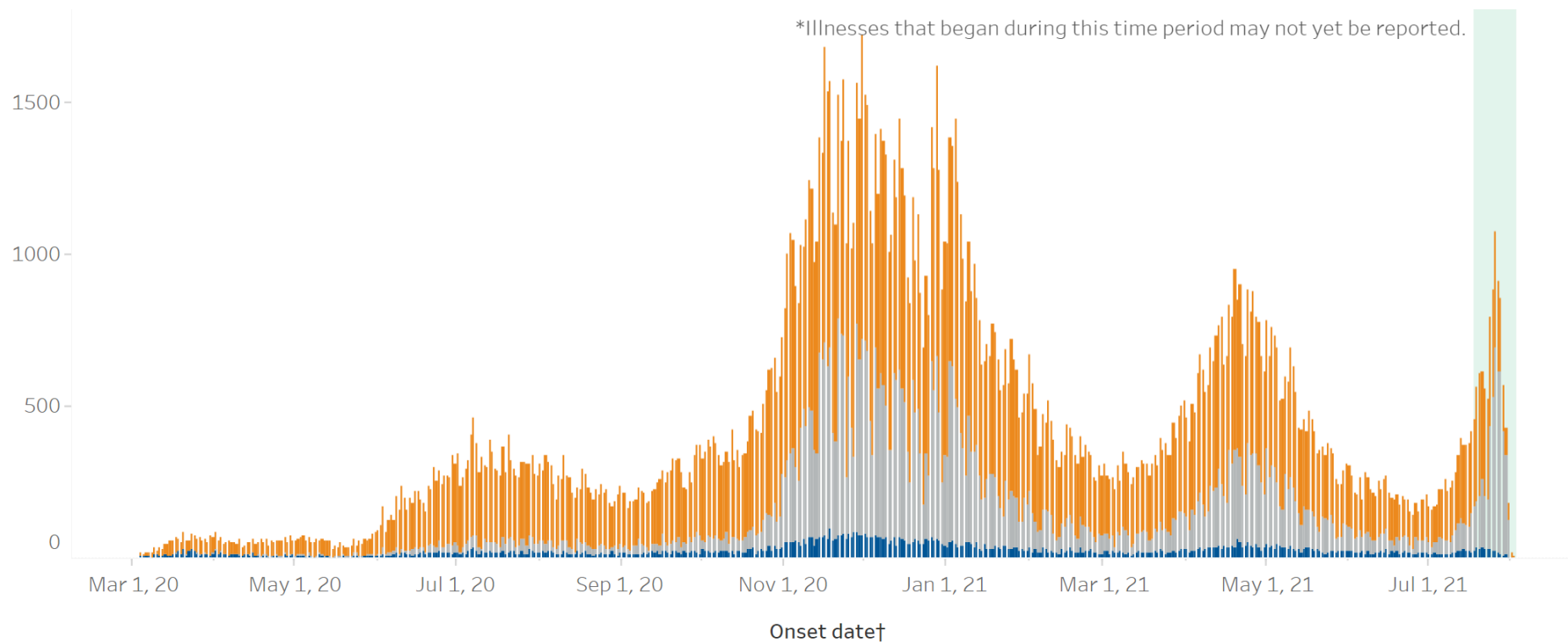
12,455

Not Hospitalized

148,868

Hospitalization
Status Unknown

62,041



Enter or drag the cursors to
change the onset date range.

March 4, 2020

August 2, 2021

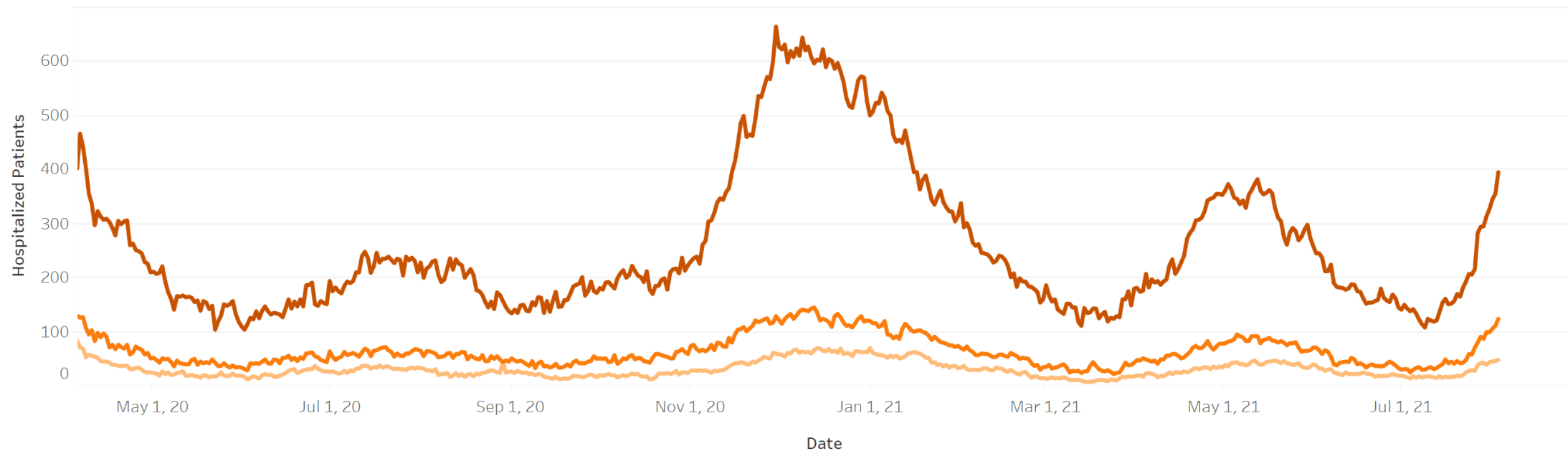
Not Hospitalized

Hospitalized

Hospitalization Status Unknown

HOSPITALIZED CASES/SEVERITY

Last Updated: 8/3/2021 9:00 AM

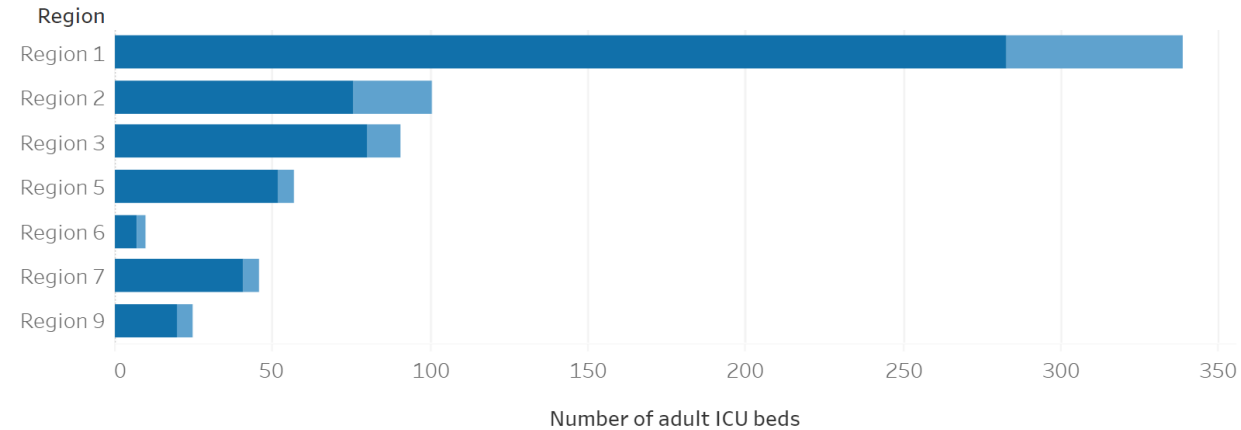


Measure Name

- Total COVID-19 patients
- Total COVID-19 patients in ICU beds
- Total COVID-19 patients on ventilators

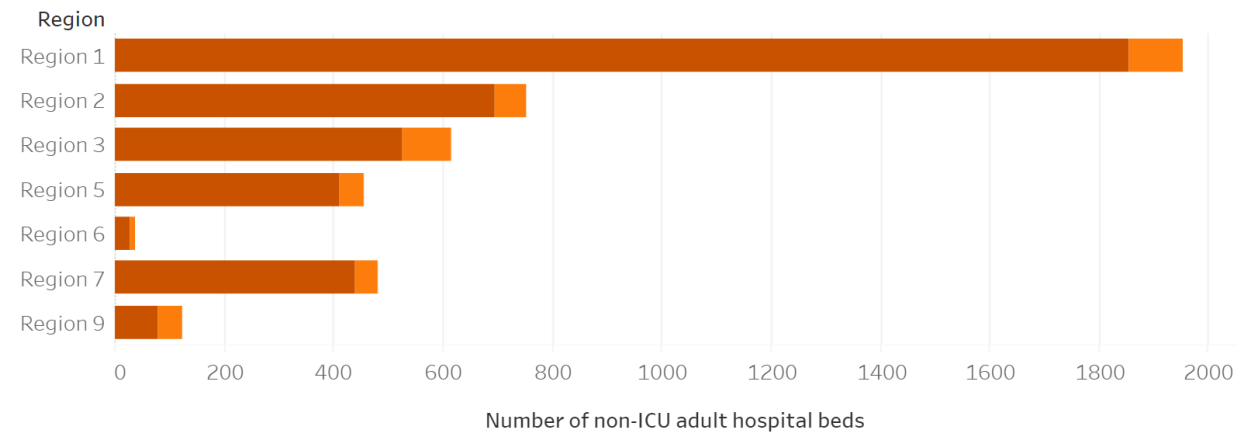
HOSPITAL CAPACITY

Occupied and **Available** staffed adult ICU beds by region



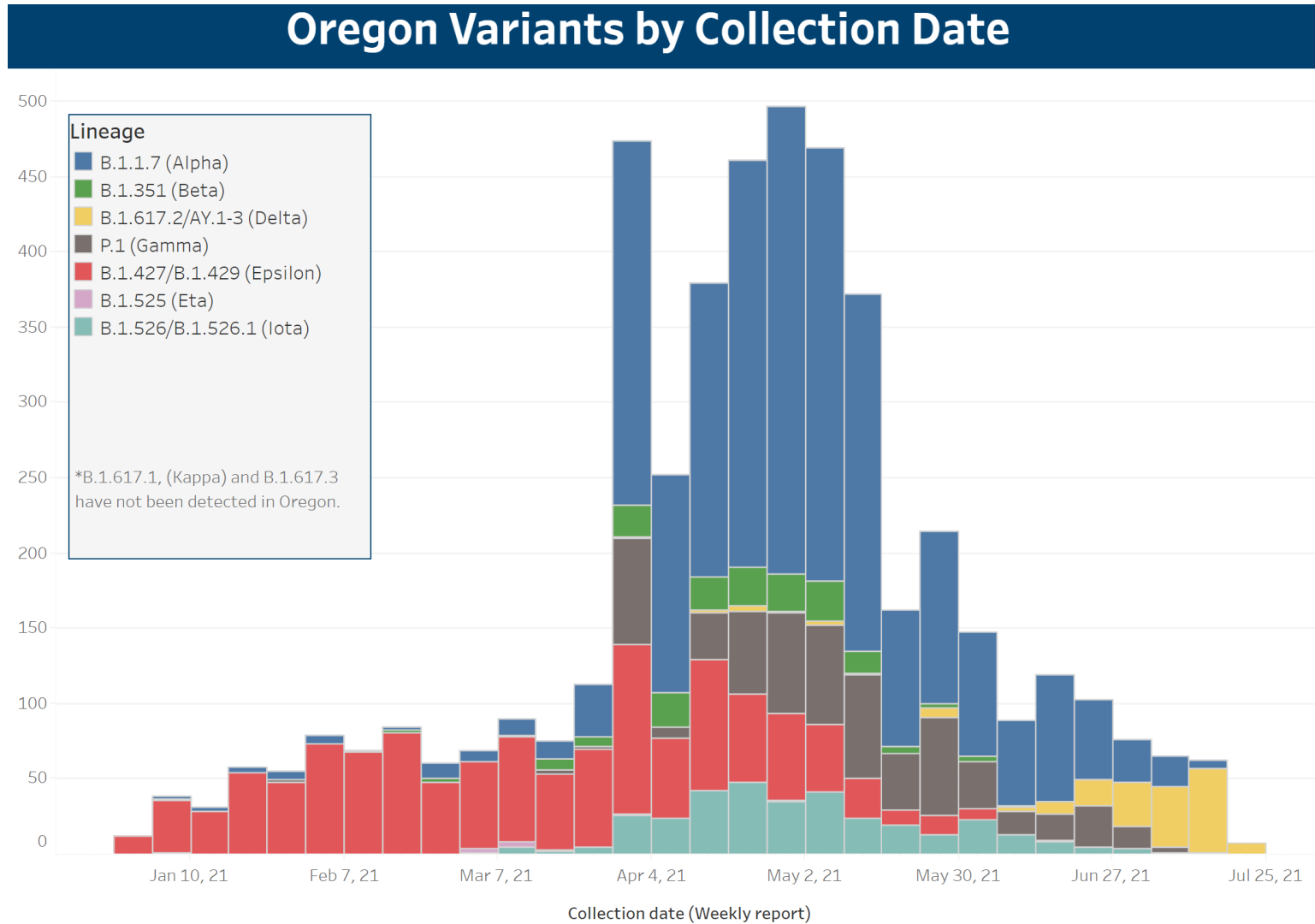
16% available

Occupied and **Available** staffed non-ICU adult hospital beds³ by region



5% available

OREGON VARIANTS (DELTA = YELLOW)

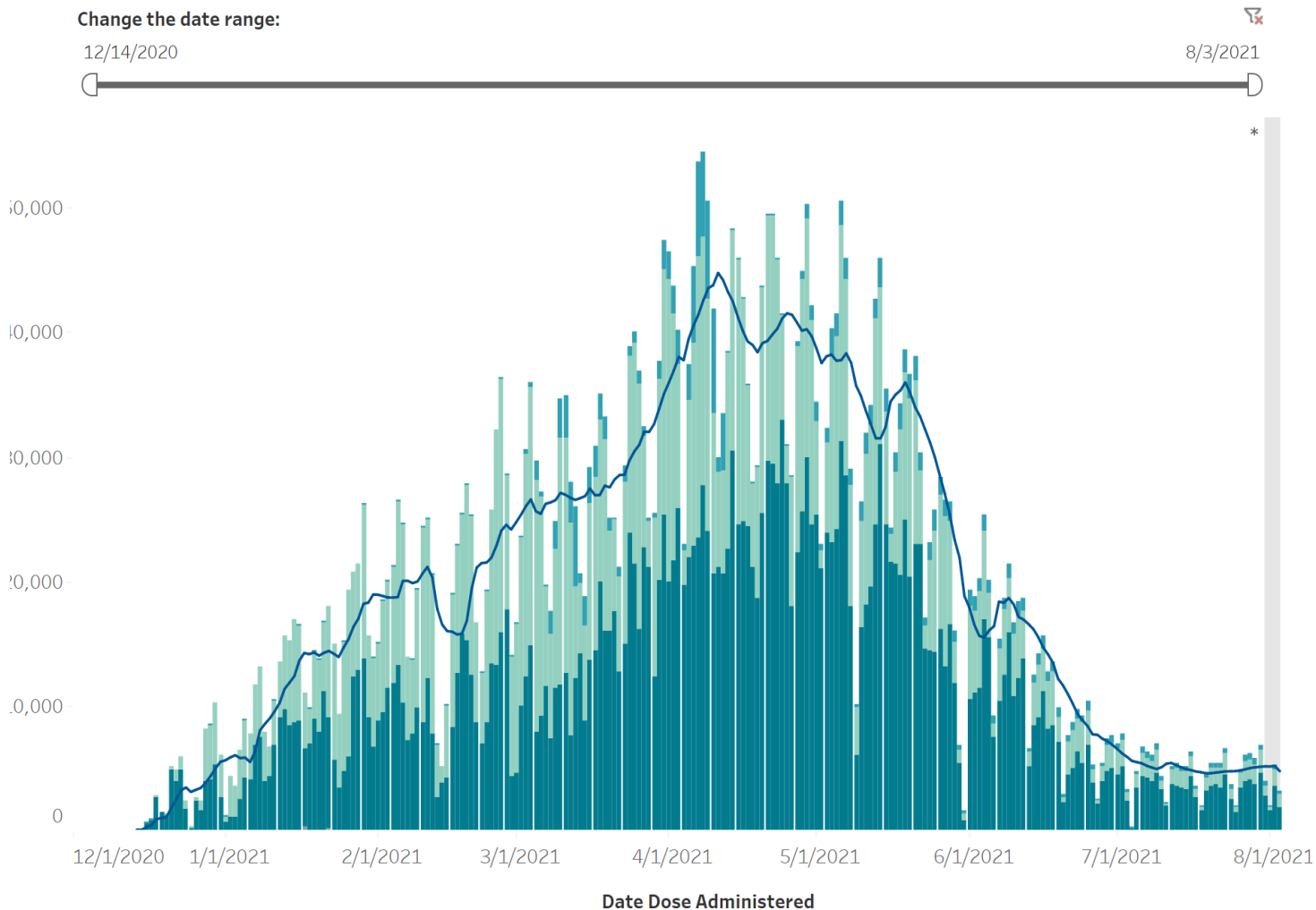


OREGON VACCINATION TRENDS

Oregon's vaccination trend: Doses Administered by Day

This chart shows the total number of COVID-19 vaccine doses that have been reported to Oregon's ALERT IIS by day and manufacturer.

*Doses administered during this time may not yet be reported.



VACCINATION BY AGE GROUP

As of week of starting 7/25, below
are percentages that have received
first dose:

<u>Age Group</u>	<u>Percent</u>
80+	83%
70 to 79	87%
60 to 69	76%
50 to 59	68%
40 to 49	67%
30 to 39	66%
20 to 29	57%
10 to 19	40%
9 and younger	0%

VACCINES IN TILLAMOOK COUNTY

(At least one dose)

- Zip Code 97141-97143 (Tillamook City) 47.7%
- Zip Code 97131 (Nehalem Bay Area) 53.7%
- Vaccines available at Tillamook County Health Dept.
 - Tuesdays 8:30-11:30AM (Pfizer, 12 years and older)
 - Thursdays 8:30-11:30A (Moderna, 18 years and older)
 - J&J both days

VACCINES MAKE A DIFFERENCE

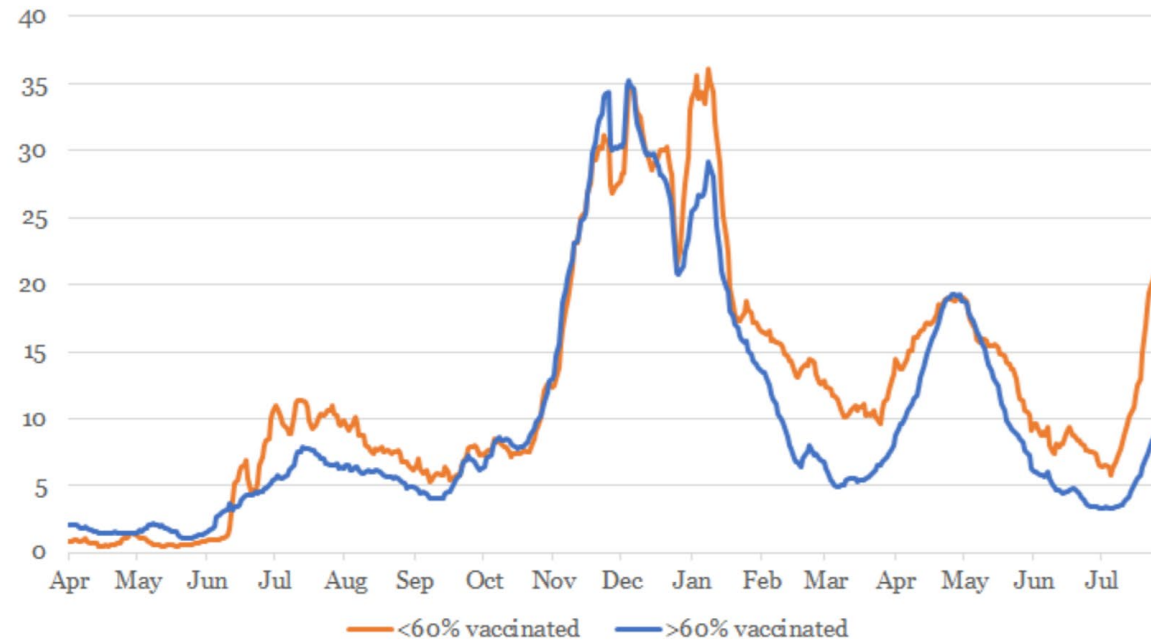


Figure 7: Seven-day rolling average numbers of new diagnosed cases per 100,000 population, by county vaccination status (below or above 60% of adults with at least one shot, as of July 28, 2021). Dates reflect when individuals had a test specimen collected.

MITIGATION OPTIONS

1. VACCINATION
2. MASKS INDOORS
3. FAMILY OR FRIEND GATHERINGS? It depends...