

PARKING CALCULATIONS

Building Area	Square Feet	Parking Load Factor	Calculated Parking Load
City Hall: Assembly	1,372 sq ft	1/50 sq ft	27.44
City Hall: Business	2,715 sq ft	1/400 sq ft	6.79
Police (Business)	1,434 sq ft	1/400 sq ft	3.59
Subtotal			37.82
Total Parking Required			38 Spaces
Total Parking Provided			38 Spaces

PARKING NOTES:

- ALL CALCULATIONS ARE BASED ON MANZANITA ZONING ORDINANCE #95-4.
- TWO SPACES ARE PROVIDED IN THE GARAGE.
- THE GARAGE AREA HAS NOT BEEN INCLUDED.

**BUILDING ENVELOPE REQUIREMENTS¹
CLIMATE ZONE: 4**

BUILDING ELEMENT	REQUIRED, TYPICAL ²	REQUIRED AT SEMI-HEATED SPACES ³			
Roofs Insulation above Deck Attic & Other	R-30ci R-49	R-10ci R-30			
Walls Above Grade Mass Wood Framed	R-9.5ci R-20	No Requirement R-13			
Slab-on-Grade Floors (Unheated)	R-15 for 24"	No Requirement			
Opaque Doors Swinging Non-swinging	U-0.37 U-0.31	U-0.37 U-0.36			
Fenestration Quantity Vertical	40% Max. Wall Area	40% Max. Wall Area			
Vertical Fenestration³ Fixed Operable Entrance Doors	Max U-value U-0.36 U-0.35 U-0.63	Max SHGC 0.36 0.33 0.33	Min VTI/SHGC 1.10 1.10 1.10	Max U-value U-0.50 U-0.65 U-0.77	Max SHGC, Min VTI/SHGC No Requirement No Requirement No Requirement

- Per ASHRAE Standard 90.1-2019.
- Minimum R-value. Maximum U-values.
- Required values are for the full glazing assemblies.

**FIRE-RESISTANCE RATINGS
FOR BUILDING ELEMENTS* (VB)**

BUILDING ELEMENT	RATING (In Hours)
Primary Structural Frame	0
Bearing Walls Exterior Interior	0 0
Nonbearing Walls & Partitions Exterior	0
Nonbearing Walls & Partitions Interior	0
Floor Construction & Associated Secondary Members	0
Roof Construction & Associated Secondary Members	0

*Per OSSC Table 601

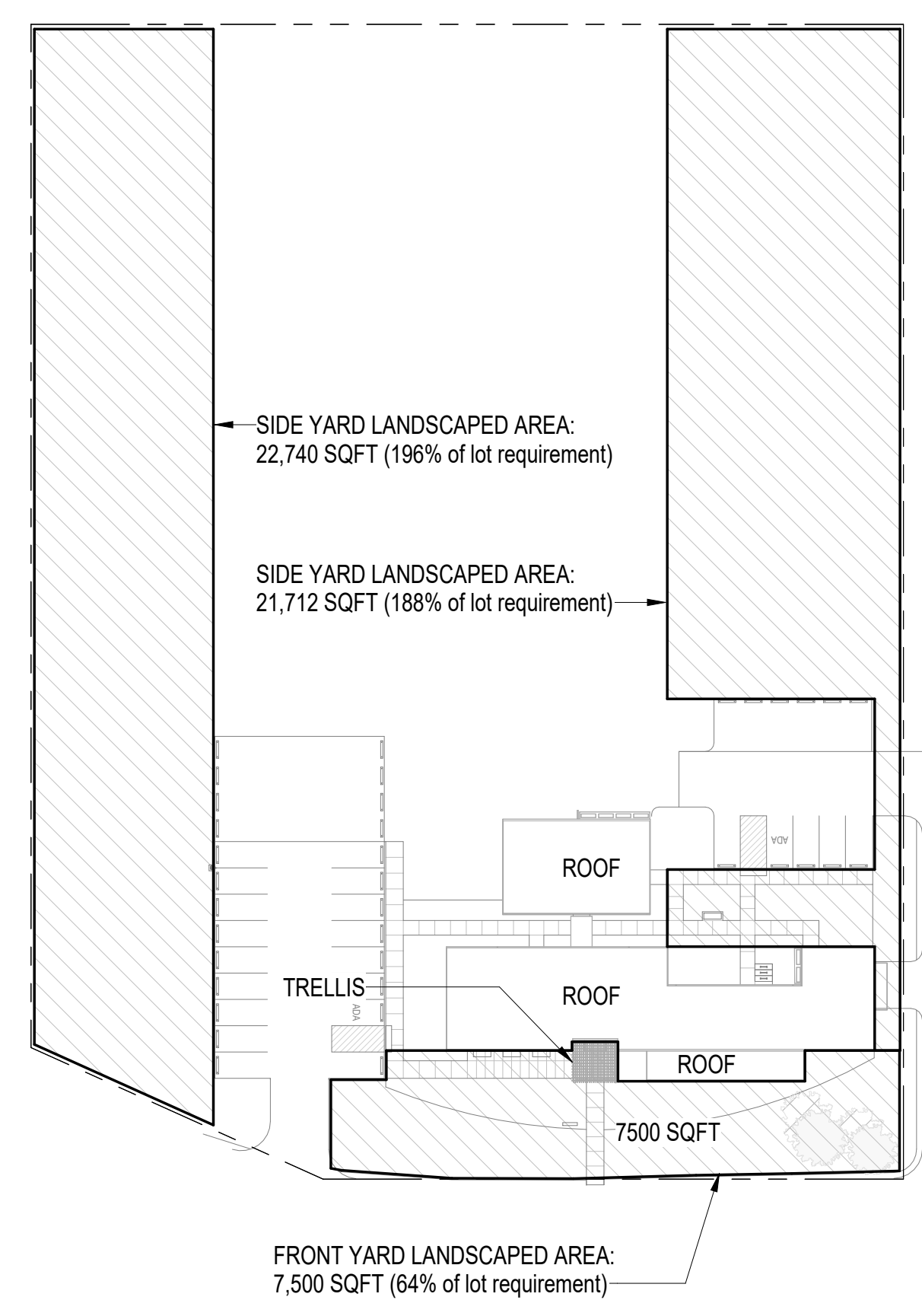
CODE SUMMARY

AUTHORITY HAVING JURISDICTION City of Manzanita, OR
APPLICABLE CODES AND STANDARDS City of Manzanita Codes and Ordinances 2022 Oregon Structural Specialty Code 2022 Oregon Mechanical Specialty Code 2021 Oregon Electrical Specialty Code 2021 Oregon Plumbing Specialty Code 2021 Oregon Energy Efficiency Specialty Code
OCCUPANCY The building occupancies are A-3 and B , non-separated per OSSC 508.3.
CONSTRUCTION TYPE Type VB Fully Sprinklered
BUILDING HEIGHT AND AREA Provided: 1 Story 17'-1" Feet High* 6,127 Square Feet @ Ground Floor 6,127 Square Feet Gross Area Total Allowed**: 2 Stories over Basement (A-3) 60 Feet High (A-3, B) 24,000 Square Feet Gross per Floor (A-3)
*Height is further limited by AHJ, see Zoning below. **Per OSSC Tables 504.3, 504.4, and 506.2
DEFERRED SUBMITTALS* Fire Sprinklers Fire Alarm Systems Storefront Glazing Prefabricated Trusses
*The general contractor shall be responsible for hiring licensed professionals to design and build the system. This includes the preparation of drawings for review by the architect and for permit as needed. The deferred submittal items shall not be installed until these documents have been reviewed and accepted by the architect and the AHJ.
ZONING* Zone: C-1 Commercial Height Allowed: 24'-0" (3:12 roof pitch or less) Height Provided: See "Building Height and Area" above. Maximum Floor Area Ratio (FAR): 0.65
*Per Manzanita Zoning Ordinance #95-4

PLUMBING SYSTEMS

Occupancy	Description	Occupant Load	Water Closet				Lavatories				Drinking Fountains ¹	Showers
			Male Load Factor	Female Load Factor	Male Fixture Count	Female Fixture Count	Male Load Factor	Female Load Factor	Male Fixture Count	Female Fixture Count		
A-3	Community Halls, Lecture Halls	169	1 per 125	0.68	1 per 65	1.30	1 per 200	0.42	1 per 200	0.42	1 per floor	0
B	Offices (including storage of records & reports)	57	1 per 25 for the first 50, 1 per 50 for the remainder	1.14	1 per 25 for the first 50, 1 per 50 for the remainder	1.14	1 per 40 for the first 50, 1 per 80 for the remainder	0.71	1 per 40 for the first 80, 1 per 80 for the remainder	0.71	0	0
Subtotal			1.82		2.44		1.13		1.13		2	0
Non-Gendered Fixtures Required			5 (1.82 + 2.44 = 4.26)		3 (1.13 + 1.13 = 2.26)		2		0		0	0
Non-Gendered Fixtures Provided			5		5		2		1		0	1

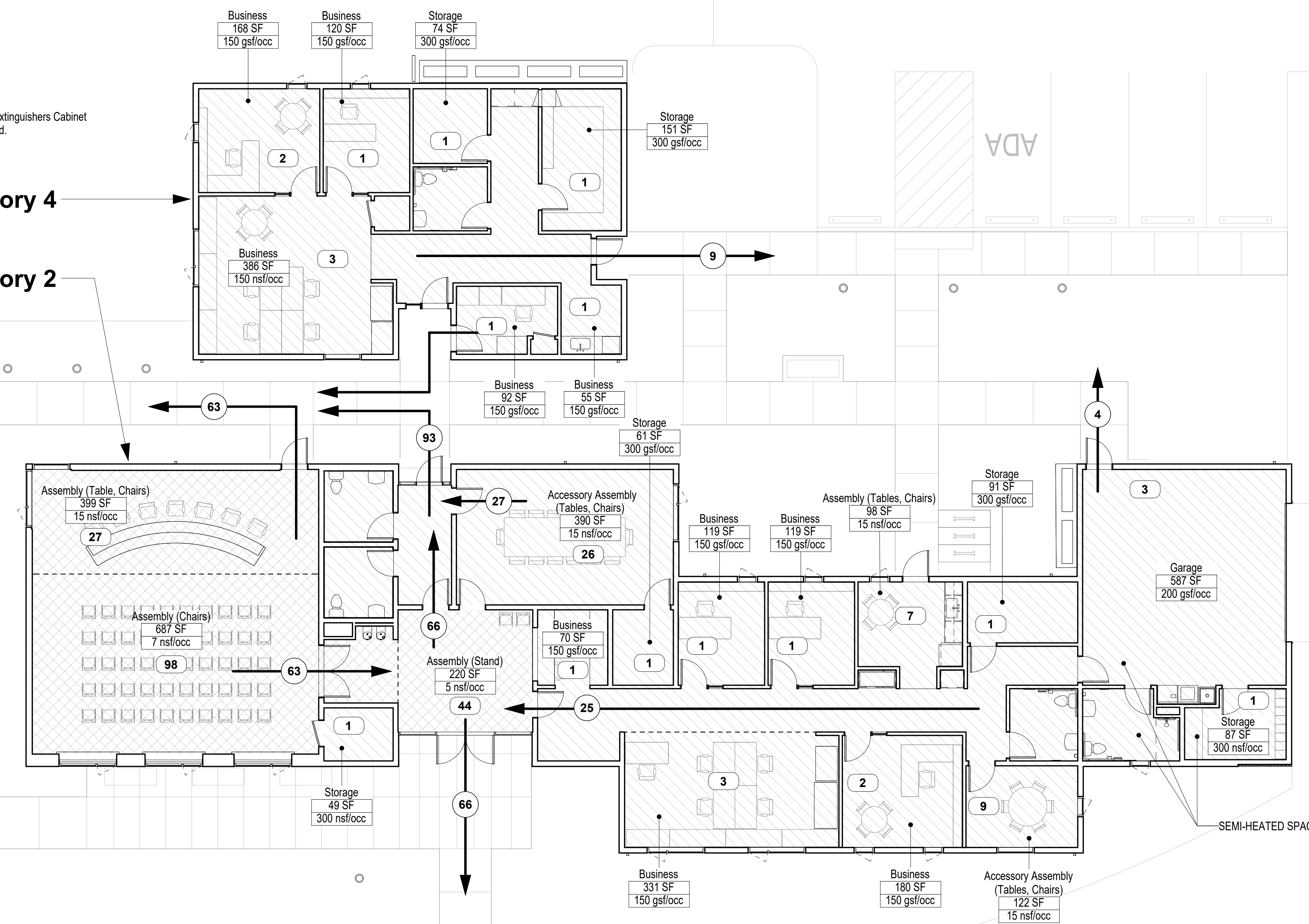
- Drinking fountains: Minimum per floor is based on OSSC Chapter 29. Minimum total is based on OSSC Section 1110.5.1.



Note: Fire Extinguisher and Fire Extinguishers Cabinet locations are to be determined.

Police: Risk Category 4

City Hall: Risk Category 2



CODE PLAN LEGEND

GENERAL
Room Tag
Assembly: xxx SF, xx gsf/occ
Function of Space
Room Area
Occupant Load Factor (net or gross)
Occupancy Load at Room
EGRESS
Common Path of Egress Travel
Exit Access Travel Distance
Major Path of Travel
Occupancy Load on Path
Path of Travel
Means of Egress Width at Stairs and Doors
Exit sign - Ceiling Mounted
Exit sign - Wall Mounted
RATED ASSEMBLIES
1 Hour Rated Wall
2 Hour Rated Wall
OCCUPANCIES
A-3: Assembly
B: Business (includes accessory Assembly spaces)

2 Landscaping Area Diagram
G2.01 SCALE: 1" = 50'-0"

1 Code Plan
G2.01 SCALE: 1/8" = 1'-0"

Manzanita City Hall
655 Manzanita Ave.
Manzanita, OR 97131



Bearing Architecture LLC
215 SE 9th Avenue - Unit 303
Portland, Oregon 97214
letstalk@bearingarchitecture.com
(503) 487-0211

Consultant

Stamp

Printing	Date
PRELIMINARY PRICING SET	Dec 16, 2022
PRICING SET	Sept 22, 2023
LAND USE APPLICATION	Nov 10, 2023

Revisions and Description Date

Drawn by AH
Bearing Job Number 2202

Sheet Title
CODE ANALYSIS

Sheet Number

G2.01

The following light fixtures are the basis of design. All fixtures will meet the proposed City of Manzanita Dark Sky Ordinance.

HK USA Lighting Group

Project Name: _____
 Fixture Type: _____

MBL08-1A/MBL08-2A
 LED Bollard - MBL08 Series

Product Features

- 360° rotation with single or bi-directional illumination.
- Recessed light source with minimal glare.
- ETL outdoor wet location listed, IP67 listed.
- Machined from solid billet 6061-T6 corrosion resistant aluminum.
- 360° horizontal adjustment via unique swivel stem design.

Specification

Material: Machined from solid 6061-T6 corrosion resistant aluminum with 104 stainless steel hardware available in 304/316 stainless steel or 303 brass upon request.

Light Source: CRI 83. Available in CDMB upon request. (Standard CCT range is within a 2-step Macadam Step). Standard CCT options are 2700K, 3000K, 4000K.

Finish: Powder coated aluminum with 104 stainless steel hardware. Finish is available in 304/316 stainless steel or 303 brass upon request.

Mounting: 1/2" ACDC. Requires remote step-down transformer.

Warranty: 5YR HLED, 3YR AMBER LED.

Ordering Guide

ITEM	MATERIAL	VOLTAGE	WATTAGE	CCT	FINISH	OPTIONAL MOUNTING ACCESSORIES
MBL08-1A	ALUM. (Standard)	12V	27-30W	2700K	Black Powder Coat	See page 2 for special accessories
MBL08-1A	304/316 SS	12V	27-30W	2700K	Black Powder Coat	See page 2 for special accessories
MBL08-2A	ALUM. (Standard)	12V	27-30W	2700K	Black Powder Coat	See page 2 for special accessories
MBL08-2A	304/316 SS	12V	27-30W	2700K	Black Powder Coat	See page 2 for special accessories

Product Drawings

HK USA Lighting Group 3529 Old Camp Road #118 Newbury Park, CA 91320 TEL 805 480 4881 FAX 805 480 4811 sales@hkusalighting.com

E1 - BOLLARD LIGHTS

Lumiere

DESCRIPTION: Lumiere 9004W1 (Up or Down) and 9004W2 (Up and Down) are 4.25" O.D. line voltage cylinder fixtures with dimmable LED. The luminaire comes in various mounting, surface mount with integral driver in the housing, remote driver mount with round and square wall plates and square wall integral driver. All of which can be mounted over standard 4 inch box. The luminaire also comes with various field replaceable option and premium color tuning option. It also comes with various lens, baffle and colors or diffusion filters, which can combine up to two at once to create multiple lighting effects. The fixture may be used indoors or outdoors and carries IP68 rating.

Specifications

Material: Housing, hood and mounting stem are precision-machined from corrosion resistant 6061-T6 aluminum.

Finish: Fixture constructed from 6061-T6 aluminum anodized per MIL-STD-883C. Anodized finish is available in clear, black, and bronze. Clear finish is standard. Other finishes are available upon request.

Head: Head is removable and accepts up to two internal accessories at once. (lenses, baffle and filter) to create multiple lighting effects. Head has a 1/2" ACDC connection. Light can be dimmed from 100% to 10% via a remote dimmer. The head has a 1/2" ACDC connection. Light can be dimmed from 100% to 10% via a remote dimmer. The head has a 1/2" ACDC connection. Light can be dimmed from 100% to 10% via a remote dimmer.

LED: LED is a high quality, long-life LED. The LED is a high quality, long-life LED. The LED is a high quality, long-life LED.

Ordering Information

DESCRIPTION	ITEM	FUNCTION	WATT	LED CCT & CR	LED DRIVER	FINISH	HOUSING	VOLTAGE	MOUNTING	OPTIONAL
9004W1-UP	9004W1-UP	Up	27W	2700K	CR83	Black	Surface Mount	120V	Standard	None
9004W1-DN	9004W1-DN	Down	27W	2700K	CR83	Black	Surface Mount	120V	Standard	None
9004W2-UP-DN	9004W2-UP-DN	Up/Down	27W	2700K	CR83	Black	Surface Mount	120V	Standard	None

Product Drawings

COOPER Lighting Systems

E2 - DOWNLIGHT AT TRELLIS

TUBE 200 LX PENDANT

PROJECT

Job: _____
 Type: _____
 Part #: _____

SPECIFICATIONS

Source: Xicato XTM LED module - up to 3000 lumens
 CCT: 2700K, 3000K, 3500K or 4000K
 Color Consistency: 1% SDCM (MacAdam) along BBL, CCT +/- 40K to 70K, Duv +/- .001
 CRI: (Ra) 83 or 90

Driver / Location: Included / Remote mount or deep canopy options
 Dimming: 0-10V or phase dimming to 10% standard, DALI, DMX and 1% dimming available
 Input Voltage: 100 to 277VAC, phase dimmable versions are 120VAC only
 Power: Up to 24 watts max, depending on LED module / driver
 Diffuser: Satin Acrylic
 Material: CNC machined aluminum, stainless steel hardware
 Finish: Powder coat - TGIC polyester for exterior and interior use
 Weight: 2 lb. (0.9 kg)
 Location: Listed for Wet & Damp locations
 Approvals: ETL, Listed to UL 1598, 2108, 8750 and CSA C22.2 # 9 & #250.0
 L80 Life: > 50,000 hours at 80% lumen maintenance based on IESNA LM-80-08
 Warranty: Lifetime Limited Warranty - see warranty for details
 Size Files: LM-79-08 E83 file available
 Modifications: Any modification or customization is possible - consult factory

ORDERING LOGIC

Model	Location	Dimming	Location	Output	CRI*	C.C.T.	Tube Length	Ball Color	Suspension	Options
TELP	Residential	None	Canopy	27-30W	83-90	2700K	20-37"	Clear	Standard	None
TELP	Commercial	0-10V	Canopy	27-30W	83-90	2700K	20-37"	Clear	Standard	None

4 3035 22nd Avenue, Unit 1 - Oakland, CA 94608 F 510.498.2530 E info@alvusa.com W alvusa.com
 Rev 200312

E3 - LUMINAIRE AT PORCH (UNDER COVER OF ROOF)

VIA 2 SEAL
 WALL DIRECT, DIRECT/INDIRECT STATIC WHITE, BIOS/STYL VIA WEATHER SERIES

DESCRIPTION

Sealed with silicone gaskets, Via Seal fixtures are intended for wet locations and can be pendant, surface, wall, or recessed mounted. They can act alone as discrete luminaires, or be arranged in continuous lines or patterns. Via 2 Seal is suitable for wet locations where temperatures are moderate and in which spaces are regularly wiped down and frequently in contact with debris and/or moisture. These luminaires can be used to create continuous, unbroken lines of light. See separate spec sheets for patterns and other available mountings.

Order Guide

LUMINAIRE	DISTRIBUTION	ENVIRONMENT*	DIRECT OPTIC	INDIRECT OPTIC	LIGHT SOURCE*			
V2SEALW	D - Direct DI - Direct/Indirect	WET+ Wet Suitable (90-94) See page 2 for more information. *Suitable for outdoor environments only when weathered under canopy. Not suitable for environments with corrosive atmospheres. Consult factory for temperature applications.	ERD+ Environmentally Resistant Direct Optic ERD- Environmentally Resistant Indirect Optic ERD-0 Environmentally Resistant Indirect Optic ERD-1 Environmentally Resistant Indirect Optic ERD-2 Environmentally Resistant Indirect Optic ERD-3 Environmentally Resistant Indirect Optic ERD-4 Environmentally Resistant Indirect Optic ERD-5 Environmentally Resistant Indirect Optic ERD-6 Environmentally Resistant Indirect Optic ERD-7 Environmentally Resistant Indirect Optic ERD-8 Environmentally Resistant Indirect Optic ERD-9 Environmentally Resistant Indirect Optic ERD-10 Environmentally Resistant Indirect Optic ERD-11 Environmentally Resistant Indirect Optic ERD-12 Environmentally Resistant Indirect Optic ERD-13 Environmentally Resistant Indirect Optic ERD-14 Environmentally Resistant Indirect Optic ERD-15 Environmentally Resistant Indirect Optic ERD-16 Environmentally Resistant Indirect Optic ERD-17 Environmentally Resistant Indirect Optic ERD-18 Environmentally Resistant Indirect Optic ERD-19 Environmentally Resistant Indirect Optic ERD-20 Environmentally Resistant Indirect Optic ERD-21 Environmentally Resistant Indirect Optic ERD-22 Environmentally Resistant Indirect Optic ERD-23 Environmentally Resistant Indirect Optic ERD-24 Environmentally Resistant Indirect Optic ERD-25 Environmentally Resistant Indirect Optic ERD-26 Environmentally Resistant Indirect Optic ERD-27 Environmentally Resistant Indirect Optic ERD-28 Environmentally Resistant Indirect Optic ERD-29 Environmentally Resistant Indirect Optic ERD-30 Environmentally Resistant Indirect Optic ERD-31 Environmentally Resistant Indirect Optic ERD-32 Environmentally Resistant Indirect Optic ERD-33 Environmentally Resistant Indirect Optic ERD-34 Environmentally Resistant Indirect Optic ERD-35 Environmentally Resistant Indirect Optic ERD-36 Environmentally Resistant Indirect Optic ERD-37 Environmentally Resistant Indirect Optic ERD-38 Environmentally Resistant Indirect Optic ERD-39 Environmentally Resistant Indirect Optic ERD-40 Environmentally Resistant Indirect Optic ERD-41 Environmentally Resistant Indirect Optic ERD-42 Environmentally Resistant Indirect Optic ERD-43 Environmentally Resistant Indirect Optic ERD-44 Environmentally Resistant Indirect Optic ERD-45 Environmentally Resistant Indirect Optic ERD-46 Environmentally Resistant Indirect Optic ERD-47 Environmentally Resistant Indirect Optic ERD-48 Environmentally Resistant Indirect Optic ERD-49 Environmentally Resistant Indirect Optic ERD-50 Environmentally Resistant Indirect Optic ERD-51 Environmentally Resistant Indirect Optic ERD-52 Environmentally Resistant Indirect Optic ERD-53 Environmentally Resistant Indirect Optic ERD-54 Environmentally Resistant Indirect Optic ERD-55 Environmentally Resistant Indirect Optic ERD-56 Environmentally Resistant Indirect Optic ERD-57 Environmentally Resistant Indirect Optic ERD-58 Environmentally Resistant Indirect Optic ERD-59 Environmentally Resistant Indirect Optic ERD-60 Environmentally Resistant Indirect Optic ERD-61 Environmentally Resistant Indirect Optic ERD-62 Environmentally Resistant Indirect Optic ERD-63 Environmentally Resistant Indirect Optic ERD-64 Environmentally Resistant Indirect Optic ERD-65 Environmentally Resistant Indirect Optic ERD-66 Environmentally Resistant Indirect Optic ERD-67 Environmentally Resistant Indirect Optic ERD-68 Environmentally Resistant Indirect Optic ERD-69 Environmentally Resistant Indirect Optic ERD-70 Environmentally Resistant Indirect Optic ERD-71 Environmentally Resistant Indirect Optic ERD-72 Environmentally Resistant Indirect Optic ERD-73 Environmentally Resistant Indirect Optic ERD-74 Environmentally Resistant Indirect Optic ERD-75 Environmentally Resistant Indirect Optic ERD-76 Environmentally Resistant Indirect Optic ERD-77 Environmentally Resistant Indirect Optic ERD-78 Environmentally Resistant Indirect Optic ERD-79 Environmentally Resistant Indirect Optic ERD-80 Environmentally Resistant Indirect Optic ERD-81 Environmentally Resistant Indirect Optic ERD-82 Environmentally Resistant Indirect Optic ERD-83 Environmentally Resistant Indirect Optic ERD-84 Environmentally Resistant Indirect Optic ERD-85 Environmentally Resistant Indirect Optic ERD-86 Environmentally Resistant Indirect Optic ERD-87 Environmentally Resistant Indirect Optic ERD-88 Environmentally Resistant Indirect Optic ERD-89 Environmentally Resistant Indirect Optic ERD-90 Environmentally Resistant Indirect Optic ERD-91 Environmentally Resistant Indirect Optic ERD-92 Environmentally Resistant Indirect Optic ERD-93 Environmentally Resistant Indirect Optic ERD-94 Environmentally Resistant Indirect Optic ERD-95 Environmentally Resistant Indirect Optic ERD-96 Environmentally Resistant Indirect Optic ERD-97 Environmentally Resistant Indirect Optic ERD-98 Environmentally Resistant Indirect Optic ERD-99 Environmentally Resistant Indirect Optic ERD-100 Environmentally Resistant Indirect Optic	SW - Static white BIOS - Static biologically-optimized BIOS+ - Dynamic biologically-optimized BIOS- - Dynamic biologically-optimized BIOS-0 - Dynamic biologically-optimized BIOS-1 - Dynamic biologically-optimized BIOS-2 - Dynamic biologically-optimized BIOS-3 - Dynamic biologically-optimized BIOS-4 - Dynamic biologically-optimized BIOS-5 - Dynamic biologically-optimized BIOS-6 - Dynamic biologically-optimized BIOS-7 - Dynamic biologically-optimized BIOS-8 - Dynamic biologically-optimized BIOS-9 - Dynamic biologically-optimized BIOS-10 - Dynamic biologically-optimized BIOS-11 - Dynamic biologically-optimized BIOS-12 - Dynamic biologically-optimized BIOS-13 - Dynamic biologically-optimized BIOS-14 - Dynamic biologically-optimized BIOS-15 - Dynamic biologically-optimized BIOS-16 - Dynamic biologically-optimized BIOS-17 - Dynamic biologically-optimized BIOS-18 - Dynamic biologically-optimized BIOS-19 - Dynamic biologically-optimized BIOS-20 - Dynamic biologically-optimized BIOS-21 - Dynamic biologically-optimized BIOS-22 - Dynamic biologically-optimized BIOS-23 - Dynamic biologically-optimized BIOS-24 - Dynamic biologically-optimized BIOS-25 - Dynamic biologically-optimized BIOS-26 - Dynamic biologically-optimized BIOS-27 - Dynamic biologically-optimized BIOS-28 - Dynamic biologically-optimized BIOS-29 - Dynamic biologically-optimized BIOS-30 - Dynamic biologically-optimized BIOS-31 - Dynamic biologically-optimized BIOS-32 - Dynamic biologically-optimized BIOS-33 - Dynamic biologically-optimized BIOS-34 - Dynamic biologically-optimized BIOS-35 - Dynamic biologically-optimized BIOS-36 - Dynamic biologically-optimized BIOS-37 - Dynamic biologically-optimized BIOS-38 - Dynamic biologically-optimized BIOS-39 - Dynamic biologically-optimized BIOS-40 - Dynamic biologically-optimized BIOS-41 - Dynamic biologically-optimized BIOS-42 - Dynamic biologically-optimized BIOS-43 - Dynamic biologically-optimized BIOS-44 - Dynamic biologically-optimized BIOS-45 - Dynamic biologically-optimized BIOS-46 - Dynamic biologically-optimized BIOS-47 - Dynamic biologically-optimized BIOS-48 - Dynamic biologically-optimized BIOS-49 - Dynamic biologically-optimized BIOS-50 - Dynamic biologically-optimized BIOS-51 - Dynamic biologically-optimized BIOS-52 - Dynamic biologically-optimized BIOS-53 - Dynamic biologically-optimized BIOS-54 - Dynamic biologically-optimized BIOS-55 - Dynamic biologically-optimized BIOS-56 - Dynamic biologically-optimized BIOS-57 - Dynamic biologically-optimized BIOS-58 - Dynamic biologically-optimized BIOS-59 - Dynamic biologically-optimized BIOS-60 - Dynamic biologically-optimized BIOS-61 - Dynamic biologically-optimized BIOS-62 - Dynamic biologically-optimized BIOS-63 - Dynamic biologically-optimized BIOS-64 - Dynamic biologically-optimized BIOS-65 - Dynamic biologically-optimized BIOS-66 - Dynamic biologically-optimized BIOS-67 - Dynamic biologically-optimized BIOS-68 - Dynamic biologically-optimized BIOS-69 - Dynamic biologically-optimized BIOS-70 - Dynamic biologically-optimized BIOS-71 - Dynamic biologically-optimized BIOS-72 - Dynamic biologically-optimized BIOS-73 - Dynamic biologically-optimized BIOS-74 - Dynamic biologically-optimized BIOS-75 - Dynamic biologically-optimized BIOS-76 - Dynamic biologically-optimized BIOS-77 - Dynamic biologically-optimized BIOS-78 - Dynamic biologically-optimized BIOS-79 - Dynamic biologically-optimized BIOS-80 - Dynamic biologically-optimized BIOS-81 - Dynamic biologically-optimized BIOS-82 - Dynamic biologically-optimized BIOS-83 - Dynamic biologically-optimized BIOS-84 - Dynamic biologically-optimized BIOS-85 - Dynamic biologically-optimized BIOS-86 - Dynamic biologically-optimized BIOS-87 - Dynamic biologically-optimized BIOS-88 - Dynamic biologically-optimized BIOS-89 - Dynamic biologically-optimized BIOS-90 - Dynamic biologically-optimized BIOS-91 - Dynamic biologically-optimized BIOS-92 - Dynamic biologically-optimized BIOS-93 - Dynamic biologically-optimized BIOS-94 - Dynamic biologically-optimized BIOS-95 - Dynamic biologically-optimized BIOS-96 - Dynamic biologically-optimized BIOS-97 - Dynamic biologically-optimized BIOS-98 - Dynamic biologically-optimized BIOS-99 - Dynamic biologically-optimized BIOS-100 - Dynamic biologically-optimized	50 - 100V UNV - 120V/277V UNV+ - 120V/277V UNV- - 120V/277V UNV-0 - 120V/277V UNV-1 - 120V/277V UNV-2 - 120V/277V UNV-3 - 120V/277V UNV-4 - 120V/277V UNV-5 - 120V/277V UNV-6 - 120V/277V UNV-7 - 120V/277V UNV-8 - 120V/277V UNV-9 - 120V/277V UNV-10 - 120V/277V UNV-11 - 120V/277V UNV-12 - 120V/277V UNV-13 - 120V/277V UNV-14 - 120V/277V UNV-15 - 120V/277V UNV-16 - 120V/277V UNV-17 - 120V/277V UNV-18 - 120V/277V UNV-19 - 120V/277V UNV-20 - 120V/277V UNV-21 - 120V/277V UNV-22 - 120V/277V UNV-23 - 120V/277V UNV-24 - 120V/277V UNV-25 - 120V/277V UNV-26 - 120V/277V UNV-27 - 120V/277V UNV-28 - 120V/277V UNV-29 - 120V/277V UNV-30 - 120V/277V UNV-31 - 120V/277V UNV-32 - 120V/277V UNV-33 - 120V/277V UNV-34 - 120V/277V UNV-35 - 120V/277V UNV-36 - 120V/277V UNV-37 - 120V/277V UNV-38 - 120V/277V UNV-39 - 120V/277V UNV-40 - 120V/277V UNV-41 - 120V/277V UNV-42 - 120V/277V UNV-43 - 120V/277V UNV-44 - 120V/277V UNV-45 - 120V/277V UNV-46 - 120V/277V UNV-47 - 120V/277V UNV-48 - 120V/277V UNV-49 - 120V/277V UNV-50 - 120V/277V UNV-51 - 120V/277V UNV-52 - 120V/277V UNV-53 - 120V/277V UNV-54 - 120V/277V UNV-55 - 120V/277V UNV-56 - 120V/277V UNV-57 - 120V/277V UNV-58 - 120V/277V UNV-59 - 120V/277V UNV-60 - 120V/277V UNV-61 - 120V/277V UNV-62 - 120V/277V UNV-63 - 120V/277V UNV-64 - 120V/277V UNV-65 - 120V/277V UNV-66 - 120V/277V UNV-67 - 120V/277V UNV-68 - 120V/277V UNV-69 - 120V/277V UNV-70 - 120V/277V UNV-71 - 120V/277V UNV-72 - 120V/277V UNV-73 - 120V/277V UNV-74 - 120V/277V UNV-75 - 120V/277V UNV-76 - 120V/277V UNV-77 - 120V/277V UNV-78 - 120V/277V UNV-79 - 120V/277V UNV-80 - 120V/277V UNV-81 - 120V/277V UNV-82 - 120V/277V UNV-83 - 120V/277V UNV-84 - 120V/277V UNV-85 - 120V/277V UNV-86 - 120V/277V UNV-87 - 120V/277V UNV-88 - 120V/277V UNV-89 - 120V/277V UNV-90 - 120V/277V UNV-91 - 120V/277V UNV-92 - 120V/277V UNV-93 - 120V/277V UNV-94 - 120V/277V UNV-95 - 120V/277V UNV-96 - 120V/277V UNV-97 - 120V/277V UNV-98 - 120V/277V UNV-99 - 120V/277V UNV-100 - 120V/277V	ERD+ Environmentally Resistant Direct Optic ERD- Environmentally Resistant Indirect Optic ERD-0 Environmentally Resistant Indirect Optic ERD-1 Environmentally Resistant Indirect Optic ERD-2 Environmentally Resistant Indirect Optic ERD-3 Environmentally Resistant Indirect Optic ERD-4 Environmentally Resistant Indirect Optic ERD-5 Environmentally Resistant Indirect Optic ERD-6 Environmentally Resistant Indirect Optic ERD-7 Environmentally Resistant Indirect Optic ERD-8 Environmentally Resistant Indirect Optic ERD-9 Environmentally Resistant Indirect Optic ERD-10 Environmentally Resistant Indirect Optic ERD-11 Environmentally Resistant Indirect Optic ERD-12 Environmentally Resistant Indirect Optic ERD-13 Environmentally Resistant Indirect Optic ERD-14 Environmentally Resistant Indirect Optic ERD-15 Environmentally Resistant Indirect Optic ERD-16 Environmentally Resistant Indirect Optic ERD-17 Environmentally Resistant Indirect Optic ERD-18 Environmentally Resistant Indirect Optic ERD-19 Environmentally Resistant Indirect Optic ERD-20 Environmentally Resistant Indirect Optic ERD-21 Environmentally Resistant Indirect Optic ERD-22 Environmentally Resistant Indirect Optic ERD-23 Environmentally Resistant Indirect Optic ERD-24 Environmentally Resistant Indirect Optic ERD-25 Environmentally Resistant Indirect Optic ERD-26 Environmentally Resistant Indirect Optic ERD-27 Environmentally Resistant Indirect Optic ERD-28 Environmentally Resistant Indirect Optic ERD-29 Environmentally Resistant Indirect Optic ERD-30 Environmentally Resistant Indirect Optic ERD-31 Environmentally Resistant Indirect Optic ERD-32 Environmentally Resistant Indirect Optic ERD-33 Environmentally Resistant Indirect Optic ERD-34 Environmentally Resistant Indirect Optic ERD-35 Environmentally Resistant Indirect Optic ERD-36 Environmentally Resistant Indirect Optic ERD-37 Environmentally Resistant Indirect Optic ERD-38 Environmentally Resistant Indirect Optic ERD-39 Environmentally Resistant Indirect Optic ERD-40 Environmentally Resistant Indirect Optic ERD-41 Environmentally Resistant Indirect Optic ERD-42 Environmentally Resistant Indirect Optic ERD-43 Environmentally Resistant Indirect Optic ERD-44 Environmentally Resistant Indirect Optic ERD-45 Environmentally Resistant Indirect Optic ERD-46 Environmentally Resistant Indirect Optic ERD-47 Environmentally Resistant Indirect Optic ERD-48 Environmentally Resistant Indirect Optic ERD-49 Environmentally Resistant Indirect Optic ERD-50 Environmentally Resistant Indirect Optic ERD-51 Environmentally Resistant Indirect Optic ERD-52 Environmentally Resistant Indirect Optic ERD-53 Environmentally Resistant Indirect Optic ERD-54 Environmentally Resistant Indirect Optic ERD-55 Environmentally Resistant Indirect Optic ERD-56 Environmentally Resistant Indirect Optic ERD-57 Environmentally Resistant Indirect Optic ERD-58 Environmentally Resistant Indirect Optic ERD-59 Environmentally Resistant Indirect Optic ERD-60 Environmentally Resistant Indirect Optic ERD-61 Environmentally Resistant Indirect Optic ERD-62 Environmentally Resistant Indirect Optic ERD-63 Environmentally Resistant Indirect Optic ERD-64 Environmentally Resistant Indirect Optic ERD-65 Environmentally Resistant Indirect Optic ERD-66 Environmentally Resistant Indirect Optic ERD-67 Environmentally Resistant Indirect Optic ERD-68 Environmentally Resistant Indirect Optic ERD-69 Environmentally Resistant Indirect Optic ERD-70 Environmentally Resistant Indirect Optic ERD-71 Environmentally Resistant Indirect Optic ERD-72 Environmentally Resistant Indirect Optic ERD-73 Environmentally Resistant Indirect Optic ERD-74 Environmentally Resistant Indirect Optic ERD-75 Environmentally Resistant Indirect Optic ERD-76 Environmentally Resistant Indirect Optic ERD-77 Environmentally Resistant Indirect Optic ERD-78 Environmentally Resistant Indirect Optic ERD-79 Environmentally Resistant Indirect Optic ERD-80 Environmentally Resistant Indirect Optic ERD-81 Environmentally Resistant Indirect Optic ERD-82 Environmentally Resistant Indirect Optic ERD-83 Environmentally Resistant Indirect Optic ERD-84 Environmentally Resistant Indirect Optic ERD-85 Environmentally Resistant Indirect Optic ERD-86 Environmentally Resistant Indirect Optic ERD-87 Environmentally Resistant Indirect Optic ERD-88 Environmentally Resistant Indirect Optic ERD-89 Environmentally Resistant Indirect Optic ERD-90 Environmentally Resistant Indirect Optic ERD-91 Environmentally Resistant Indirect Optic ERD-92 Environmentally Resistant Indirect Optic ERD-93 Environmentally Resistant Indirect Optic ERD-94 Environmentally Resistant Indirect Optic ERD-95 Environmentally Resistant Indirect Optic ERD-96 Environmentally Resistant Indirect Optic ERD-97 Environmentally Resistant Indirect Optic ERD-98 Environmentally Resistant Indirect Optic ERD-99 Environmentally Resistant Indirect Optic ERD-100 Environmentally Resistant Indirect Optic	50 - 100V UNV - 120V/277V UNV+ - 120V/277V UNV- - 120V/277V UNV-0 - 120V/277V UNV-1 - 120V/277V UNV-2 - 120V/277V UNV-3 - 120V/277V UNV-4 - 120V/277V UNV-5 - 120V/277V UNV-6 - 120V/277V UNV-7 - 120V/277V UNV-8 - 120V/277V UNV-9 - 120V/277V UNV-10 - 120V/277V UNV-11 - 120V/277V UNV-12 - 120V/277V UNV-13 - 120V/277V UNV-14 - 120V/277V UNV-15 - 120V/277V UNV-16 - 120V/277V UNV-17 - 120V/277V UNV-18 - 120V/277V UNV-19 - 120V/277V UNV-20 - 120V/277V UNV-21 - 120V/277V UNV-22 - 120V/277V UNV-23 - 120V/277V UNV-24 - 120V/277V UNV-25 - 120V/277V UNV-26 - 120V/277V UNV-27 - 120V/277V UNV-28 - 120V/277V UNV-29 - 120V/277V UNV-30 - 120V/277V UNV-31 - 120V/277V UNV-32 - 120V/277V UNV-33 - 120V/277V UNV-34 - 120V/277V UNV-35 - 120V/277V UNV-36 - 120V/277V UNV-37 - 120V/277V UNV-38 - 120V/277V UNV-39 - 120V/277V UNV-40 - 120V/277V UNV-41 - 120V/277V UNV-42 - 120V/277V UNV-43 - 120V/277V UNV-44 - 120V/277V UNV-45 - 120V/277V UNV-46 - 120V/277V UNV-47 - 120V/277V UNV-48 - 120V/277V UNV-49 - 120V/277V UNV-50 - 120V/277V UNV-51 - 120V/277V UNV-52 - 120V/277V UNV-53 - 120V/277V UNV-54 - 120V/277V UNV-55 - 120V/277V UNV-56 - 120V/277V UNV-57 - 120V/277V UNV-58 - 120V/277V UNV-59 - 120V/277V UNV-60 - 120V/277V UNV-61 - 120V/277V UNV-62 - 120V/277V UNV-63 - 120V/277V UNV-64 - 120V/277V UNV-65 - 120V/277V UNV-66 - 120V/277V UNV-67 - 120V/277V UNV-68 - 120V/277V UNV-69 - 120V/277V UNV-70 - 120V/277V UNV-71 - 120V/277V UNV-72 - 120V/277V UNV-73 - 120V/277V UNV-74 - 120V/277V UNV-75 - 120V/277V UNV-76 - 120V/277V UNV-77 - 120V/277V UNV-78 - 120V/277V UNV-79 - 120V/277V UNV-80 - 120V/277V UNV-81 - 120V/277V UNV-82 - 120V/277V UNV-83 - 120V/277V UNV-84 - 120V/277V UNV-85 - 120V/277V UNV-86 - 120V/277V UNV-87 - 120V/277V UNV-88 - 120V/277V UNV-89 - 120V/277V UNV-90 - 120V/277V UNV-91 - 120V/277V UNV-92 - 120V/277V UNV-93 - 120V/277V UNV-94 - 120V/277V UNV-95 - 120V/277V UNV-96 - 120V/277V UNV-97 - 120V/277V UNV-98 - 120V/277V UNV-99 - 120V/277V UNV-100 - 120V/277V	ERD+ Environmentally Resistant Direct Optic ERD- Environmentally Resistant Indirect Optic ERD-0 Environmentally Resistant Indirect Optic ERD-1 Environmentally Resistant Indirect Optic ERD-2 Environmentally Resistant Indirect Optic ERD-3 Environmentally Resistant Indirect Optic ERD-4 Environmentally Resistant Indirect Optic ERD-5 Environmentally Resistant Indirect Optic ERD-6 Environmentally Resistant Indirect Optic ERD-7 Environmentally Resistant Indirect Optic ERD-8 Environmentally Resistant Indirect Optic ERD-9 Environmentally Resistant Indirect Optic ERD-10 Environmentally Resistant Indirect Optic ERD-11 Environmentally Resistant Indirect Optic ERD-12 Environmentally Resistant Indirect Optic ERD-13 Environmentally Resistant Indirect Optic ERD-14 Environmentally Resistant Indirect Optic ERD-15 Environmentally Resistant Indirect Optic ERD-16 Environmentally Resistant Indirect Optic ERD-17 Environmentally Resistant Indirect Optic ERD-18 Environmentally Resistant Indirect Optic ERD-19 Environmentally Resistant Indirect Optic ERD-20 Environmentally Resistant Indirect Optic ERD-21 Environmentally Resistant Indirect Optic ERD-22 Environmentally Resistant Indirect Optic ERD-23 Environmentally Resistant Indirect Optic ERD-24 Environmentally Resistant Indirect Optic ERD-25 Environmentally Resistant Indirect Optic ERD-26 Environmentally Resistant Indirect Optic ERD-27 Environmentally Resistant Indirect Optic ERD-28 Environmentally Resistant Indirect Optic ERD-29 Environmentally Resistant Indirect Optic ERD-30 Environmentally Resistant Indirect Optic ERD-31 Environmentally Resistant Indirect Optic ERD-32 Environmentally Resistant Indirect Optic ERD-33 Environmentally Resistant Indirect Optic ERD-34 Environmentally Resistant Indirect Optic ERD-35 Environmentally Resistant Indirect Optic ERD-36 Environmentally Resistant Indirect Optic ERD-37 Environmentally Resistant Indirect Optic ERD-38 Environmentally Resistant Indirect Optic ERD-39 Environmentally Resistant Indirect Optic ERD-40 Environmentally Resistant Indirect Optic ERD-41 Environmentally Resistant Indirect Optic ERD-42 Environmentally Resistant Indirect Optic ERD-43 Environmentally Resistant Indirect Optic ERD-44 Environmentally Resistant Indirect Optic ERD-4

