



SITE INFORMATION

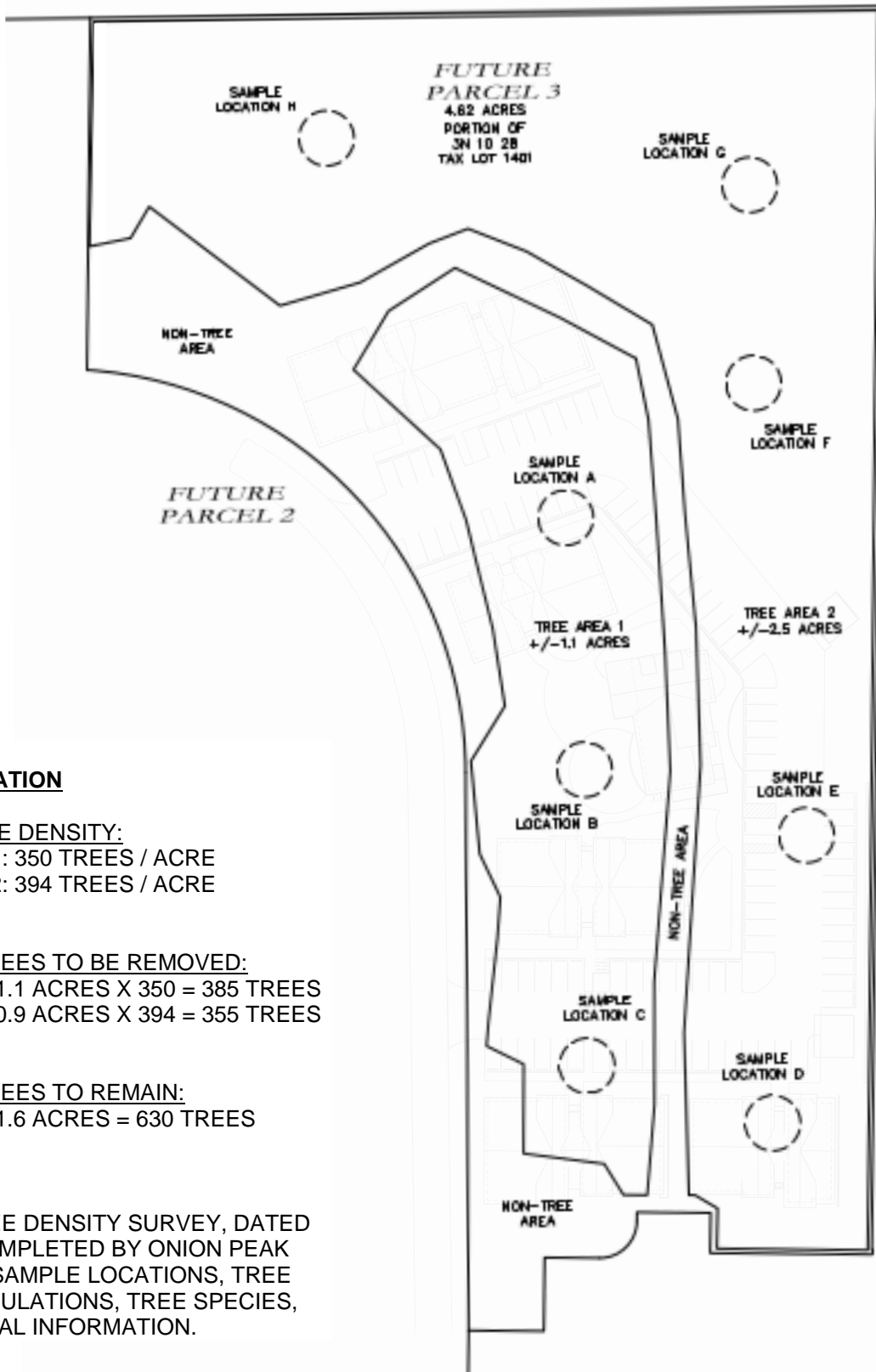
DEVELOPED AREA: 119,636 SQ. FT.
 OPEN SPACE AREA: 81,704 SQ. FT.
 TOTAL AREA: 201,340 SQ. FT.

Polyphon
 ARCHITECTURE & DESIGN, LLC polyphon.com
 4103 NE TILLAMOOK STREET | PORTLAND, OR 97212

MANZANITA PINES

0 LOOP RD MANZANITA, OR

SITE AERIAL -
 TIMBER SURVEY
TS1
 ORIGINAL SHEET
 SIZE: 8.5" x 11"



TREE INFORMATION

AVERAGE TREE DENSITY:

TREE AREA 1: 350 TREES / ACRE
 TREE AREA 2: 394 TREES / ACRE

PROPOSED TREES TO BE REMOVED:

AREA 1 = +/- 1.1 ACRES X 350 = 385 TREES
 AREA 2 = +/- 0.9 ACRES X 394 = 355 TREES

PROPOSED TREES TO REMAIN:

AREA 2 = +/- 1.6 ACRES = 630 TREES

NOTE:

REFER TO TREE DENSITY SURVEY, DATED 12-27-2024, COMPLETED BY ONION PEAK DESIGN, FOR SAMPLE LOCATIONS, TREE DENSITY CALCULATIONS, TREE SPECIES, AND ADDITIONAL INFORMATION.