

NOTES:

* ALL DIMENSIONS SHOWN ARE MINIMUM AND RELATIVE TO OUTSIDE OF PIPE BELL.

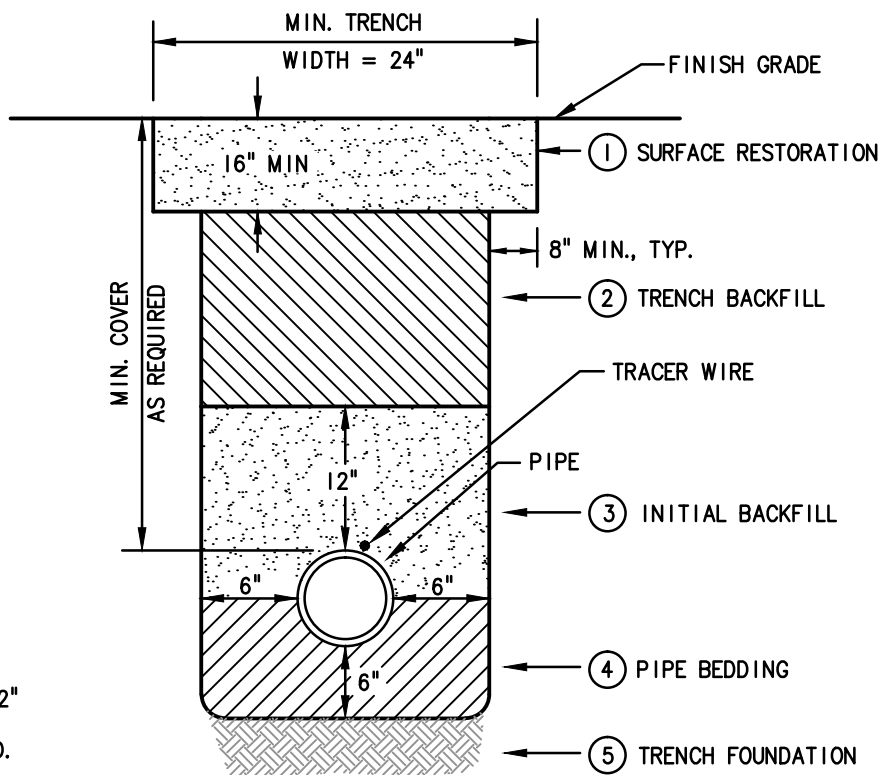
*** MINIMUM COVER:**

WATER MAIN = 30"
WATER SERVICE = 24"

TRENCH MATERIAL:

- ① 4" MIN. ASPHALT SURFACE RESTORATION OVER 12" MIN. THICKNESS $\frac{3}{4}$ "-0" COMPACTED CRUSHED ROCK,
- ② COMPACTED NATIVE SAND.
- ③ COMPACTED NATIVE SAND.
- ④ $\frac{3}{4}$ "-0" COMPACTED CRUSHED ROCK.*
- ⑤ UNDISTURBED NATIVE MATERIAL OR 1-1/2" MINUS CRUSHED ROCK IF TRENCH FOUNDATION STABILIZATION IS REQUIRED.

* FOR PIPES 4"Ø AND SMALLER, CLEAN NATIVE SAND MAY BE USED FOR PIPE BEDDING AT THE DISCRETION OF THE CITY OF MANZANITA PUBLIC WORKS DEPARTMENT.

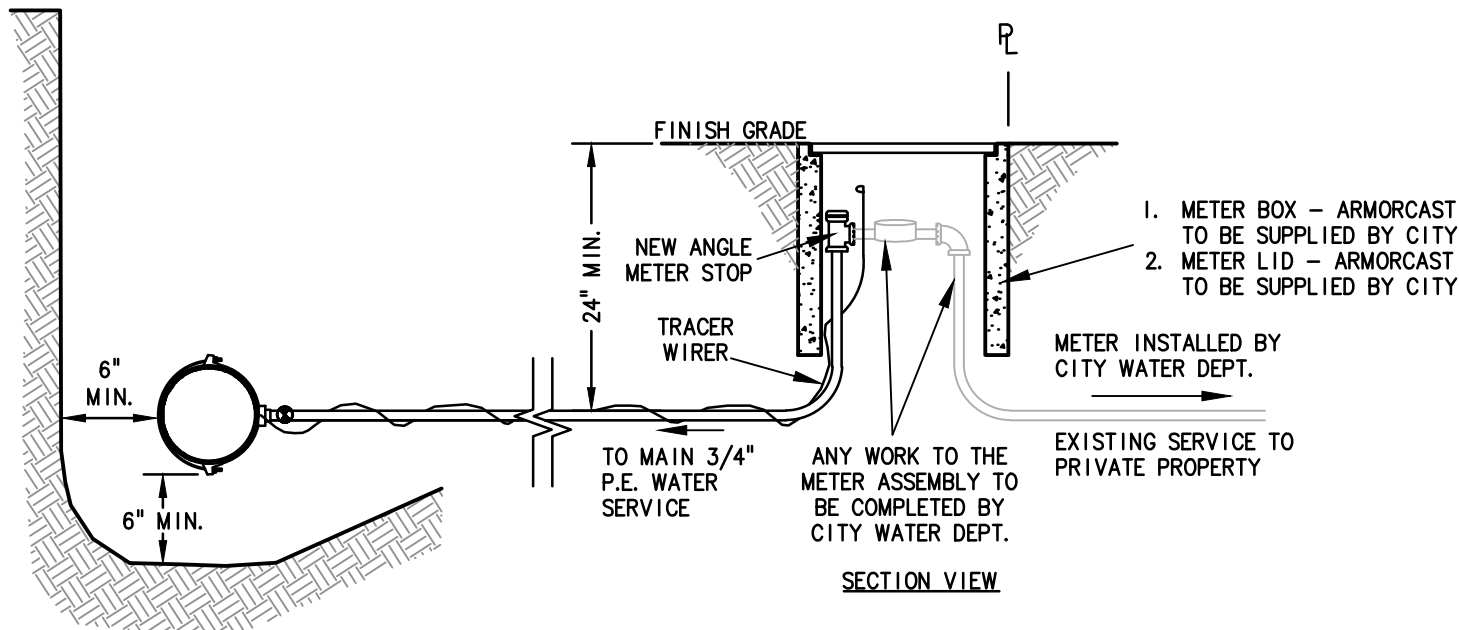


CITY OF MANZANITA
STANDARD CONSTRUCTION DRAWINGS

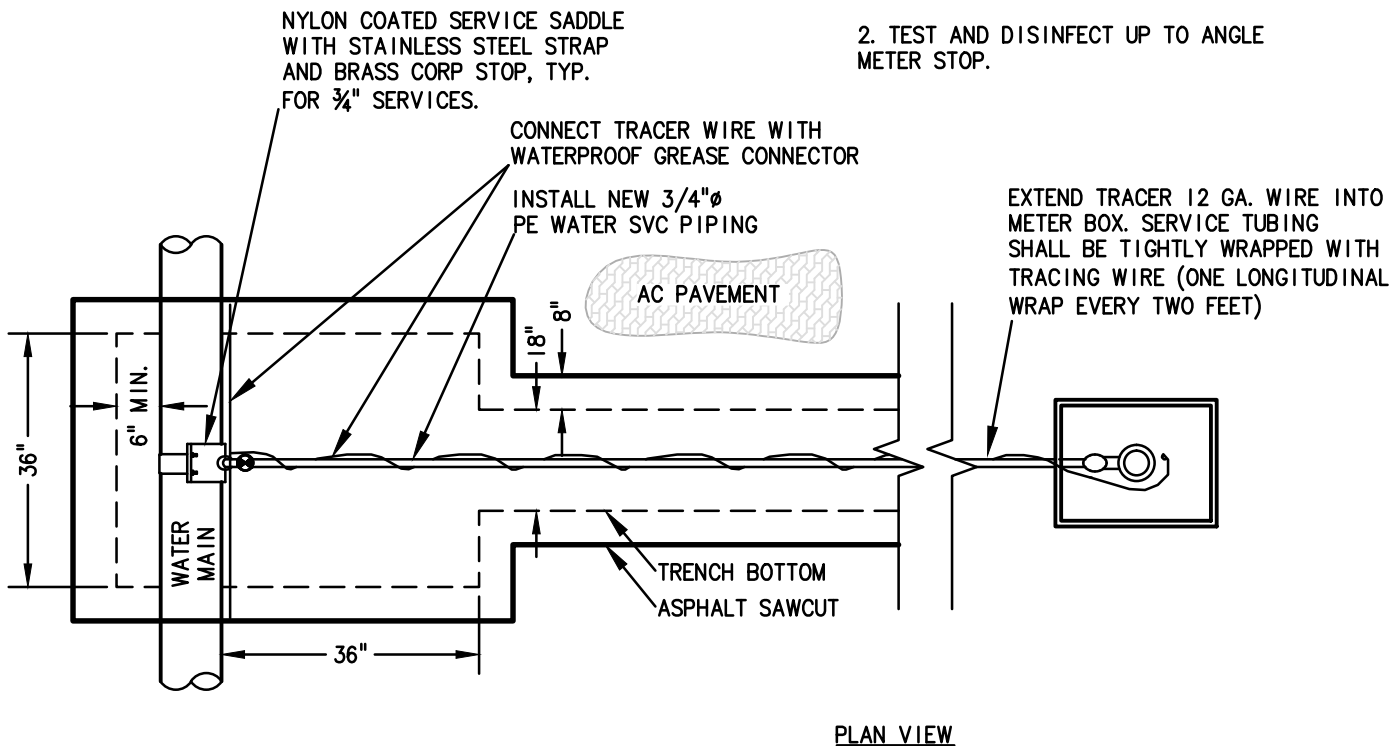
PIPE TRENCHING DETAIL

SCALE	N.T.S.
DATE	FEBRUARY 2016
APPR.	
DWG.	PIPE TRENCH DETAIL

DRAWN	KKA	
ENGR.	OTAK	
REV.	DATE	APPR.



1. FOR RELOCATED WATER SERVICES CONNECTING TO THE EXISTING METER, INSTALL NEW PE SERVICE WITH NEW ANGLE METER STOP.
2. TEST AND DISINFECT UP TO ANGLE METER STOP.



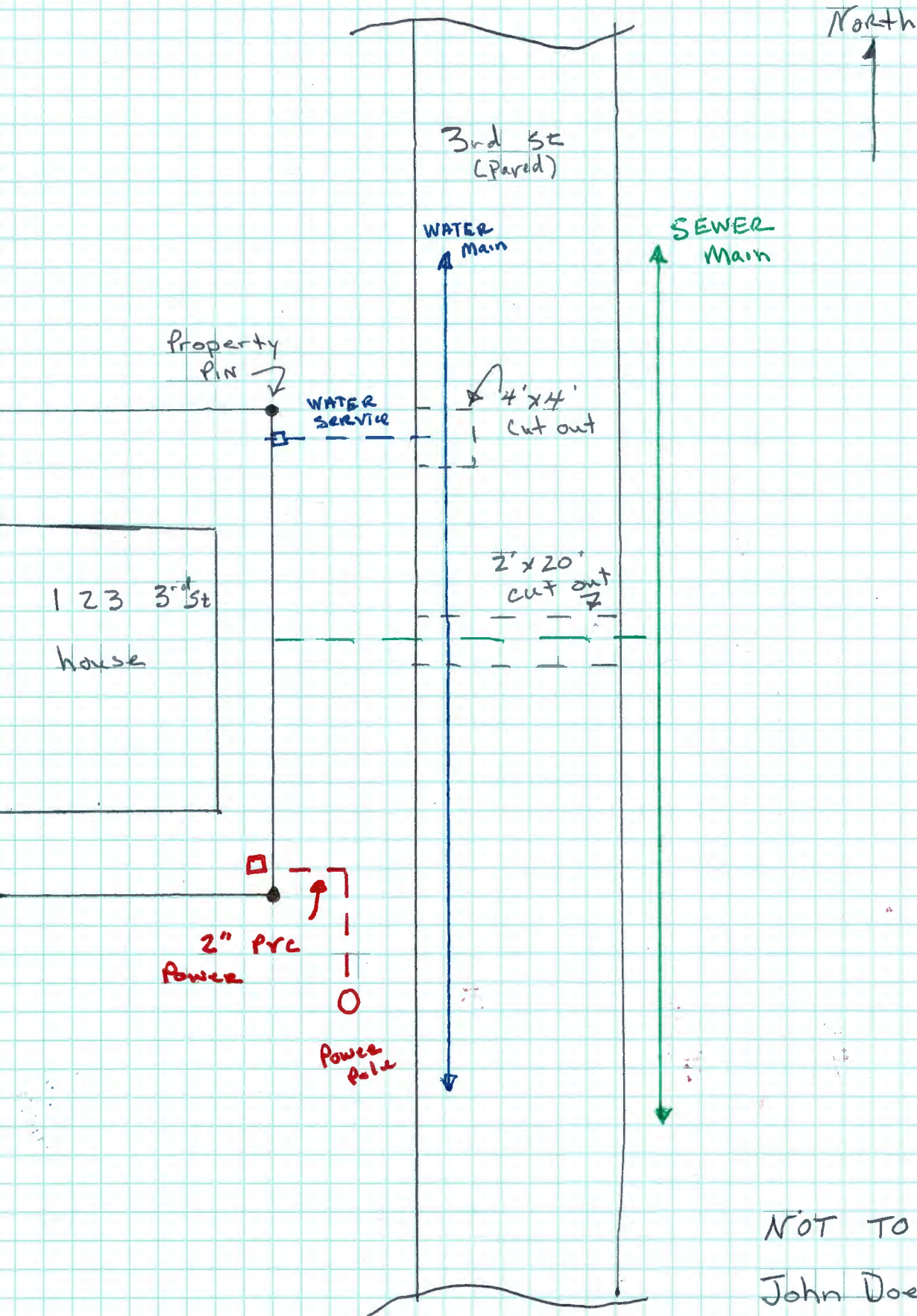
DRAWN	KKA	
ENGR.	OTAK	
REV.	DATE	APPR.

CITY OF MANZANITA
STANDARD CONSTRUCTION DRAWINGS

WATER SERVICE DETAIL

SCALE	N.T.S.
DATE	JULY 2015
APPR.	D.WEITZEL - PWD
DWG.	WATER SVC DETAIL

UTILITY PERMIT DRAWING EXAMPLE



NOT TO SCALE

John Doe 503-555-5555