

**NOTES**

THIS MAP DOES NOT CONSTITUTE A BOUNDARY SURVEY OF THE SUBJECT PROPERTY. THE PURPOSE OF THIS MAP IS SHOW THE APPROXIMATE OUTLINE OF THE TREAED AREA OF FUTURE PARCEL 3 (4.62 ACRES) ALONG WITH EIGHT SAMPLE LOCATIONS. SAID SAMPLE LOCATIONS WERE THEN USED TO CALCULATE THE APPROXIMATE NUMBER OF CONIFEROUS TREES PER ACRE ON THE SUBJECT PROPERTY. THE SUBJECT PROPERTY IS FUTURE PARCEL 3 THAT HAS BEEN APPROVED BY THE CITY OF MANZANITA AND CURRENTLY GOING THROUGH FINAL MONUMENTS AND PLATTING. THE EXTERIOR BOUNDARY SHOWN HEREON IS BASED ON SAID APPROVED PARTITION. TREES WERE COUNTED IN 30' DIAMETER SAMPLE LOCATIONS. THREE SAMPLE LOCATIONS WERE UTILIZED FOR TREE AREA 1 AND 5 LOCATIONS WERE UTILIZED FOR TREE AREA 2. THE TREE LINE AREA IS APPROXIMATE AND BASED ON AERIAL IMAGERY.

**SAMPLE LOCATIONS**

TREE AREA 1  
 LOCATION A - 30' DIAMETER SAMPLE SITE (CONIFEROUS TREES 6"Ø OR GREATER).  
 6"Ø PINE: 5  
 8"Ø PINE: 1  
 8"Ø FIR: 1  
 TOTAL: 7

LOCATION B - 30' DIAMETER SAMPLE SITE (CONIFEROUS TREES 6"Ø OR GREATER).  
 6"Ø PINE: 2  
 8"Ø PINE: 1  
 10"Ø FIR: 2  
 TOTAL: 5

LOCATION C - 30' DIAMETER SAMPLE SITE (CONIFEROUS TREES 6"Ø OR GREATER).  
 10"Ø PINE: 3  
 12"Ø PINE: 1  
 5"Ø CEDAR: 1  
 TOTAL: 5

TREE AREA 2  
 LOCATION D - 30' DIAMETER SAMPLE SITE (CONIFEROUS TREES 6"Ø OR GREATER).  
 6"Ø FIR: 1  
 6"Ø HEMLOCK: 3  
 8"Ø HEMLOCK: 2  
 12"Ø HEMLOCK: 1  
 TOTAL: 7

LOCATION E - 30' DIAMETER SAMPLE SITE (CONIFEROUS TREES 6"Ø OR GREATER).  
 8"Ø PINE: 1  
 6"Ø HEMLOCK: 3  
 8"Ø HEMLOCK: 2  
 TOTAL: 6

LOCATION F - 30' DIAMETER SAMPLE SITE (CONIFEROUS TREES 6"Ø OR GREATER).  
 6"Ø PINE: 3  
 8"Ø PINE: 2  
 TOTAL: 5

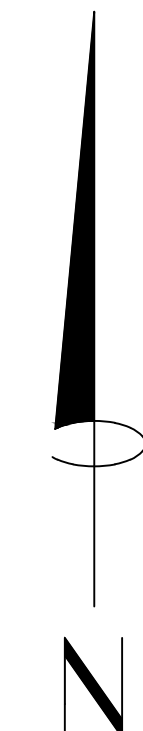
LOCATION G - 30' DIAMETER SAMPLE SITE (CONIFEROUS TREES 6"Ø OR GREATER).  
 6"Ø PINE: 2  
 6"Ø HEMLOCK: 1  
 8"Ø HEMLOCK: 2  
 10"Ø HEMLOCK: 1  
 6"Ø CEDAR: 1  
 6"Ø SPRUCE: 1  
 TOTAL: 8

LOCATION H - 30' DIAMETER SAMPLE SITE (CONIFEROUS TREES 6"Ø OR GREATER).  
 10"Ø PINE: 1  
 12"Ø PINE: 1  
 6"Ø HEMLOCK: 2  
 8"Ø HEMLOCK: 1  
 24"Ø HEMLOCK: 1  
 TOTAL: 6

**TREE CALCULATIONS**

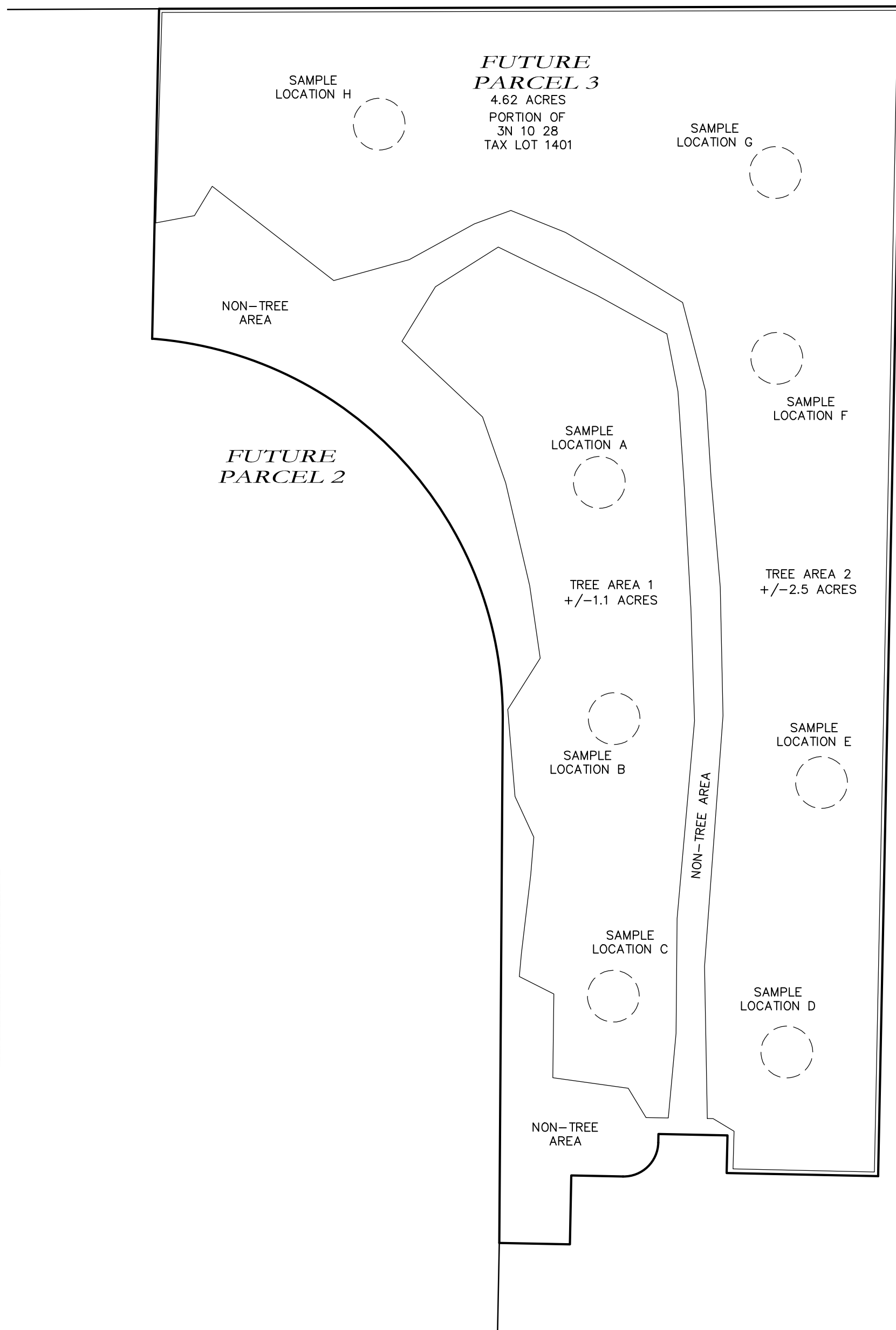
TREE AREA 1  
 3 SAMPLE LOCATIONS @ 707 SQ. FT. EACH  
 17 TREES IN 2,121 SQ. FT.  
 = +/-350 TREES PER ACRE.

TREE AREA 2  
 5 SAMPLE LOCATIONS @ 707 SQ. FT. EACH  
 32 TREES IN 3,535 SQ. FT.  
 = +/-394 TREES PER ACRE.



SCALE:  
 1" = 60'

REGISTERED  
 PROFESSIONAL  
 LAND SURVEYOR  
*Erick M White*  
 OREGON  
 APRIL 28, 2014  
 ERICK M. WHITE  
 78572  
 RENEWS 6/30/2026



**ONION PEAK  
 DESIGN**

11460 EVERGREEN WAY  
 NEHALEM, OR 97131  
 (503) 440-4403

HOMEFIRST2412-TREE.DWG

TREE DENSITY SURVEY FOR:  
**MANZANITA PINES  
 APARTMENTS**

A PORTION OF 3N 10 28 TAX LOT 1401  
 (FUTURE PARCEL 3)

NW 1/4 OF THE SE 1/4, SECTION 28, T3N, R10W, W.M.  
 TILLAMOOK COUNTY  
 DECEMBER 27, 2024