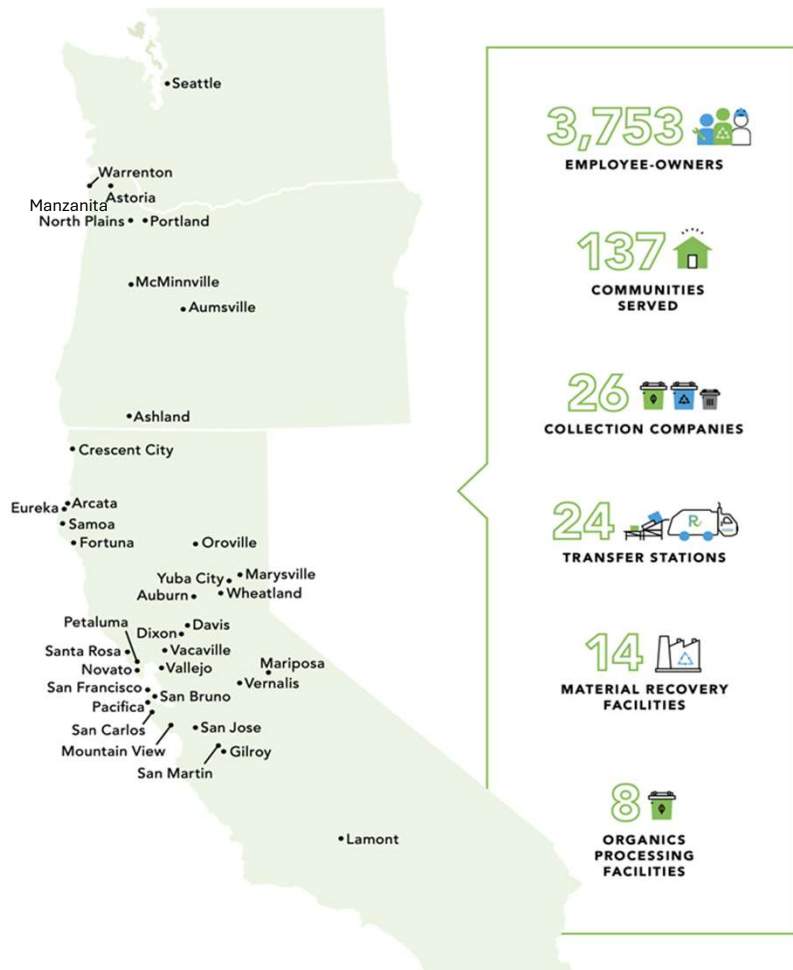




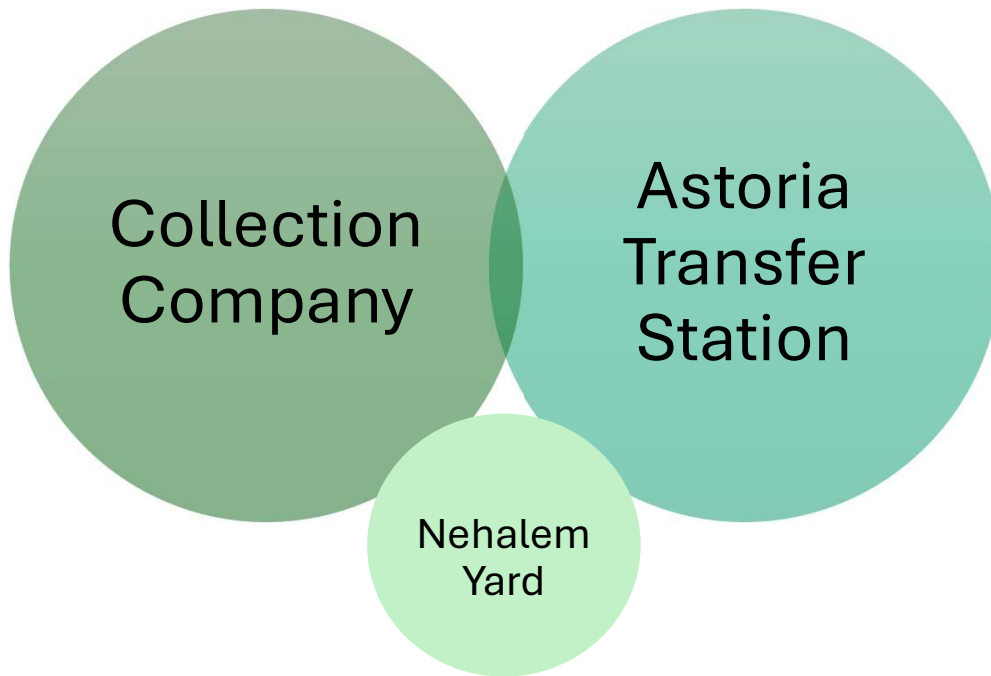
Manzanita Rate Review - 2025



Recology | 2025



Recology – Tillamook/Clatsop County Operations



Communities We Serve

- Manzanita
- Nehalem
- Wheeler
- Rockaway
- Tillamook County
- Cannon Beach
- Seaside
- Gearhart
- Warrenton
- Astoria
- Clatsop County

Rate Review and Collection System

Solid Waste Franchise and Rate Setting:

- **CPI based 2.1% Rate Increase**
- **32 gallon - \$.57, 90 gallon - \$.95**
- Annual Financial Review April 1
- Actual and projected expenses
- Cost of Service plus rate setting
- Allowable margin range of 8-12%
- Prior year actual Margin 6.02%
- **With 2.1%, projected margin is 10.67%**



Manzanita Residential Rates

32 GALLON CART SERVICE

MONTHLY RATES

32GWC	32G CART-CURB	\$ 27.02	2.10%	\$ 0.57	\$ 27.59
32GEC	32G CART EOW-CURBSIDE	\$ 17.57	2.10%	\$ 0.37	\$ 17.94
32GMC	32G CART MONTHLY-CURB	\$ 9.47	2.10%	\$ 0.20	\$ 9.67
OC3C	32 GAL CART ON CALL CURB	\$ 9.47	2.10%	\$ 0.20	\$ 9.67
	EACH ADDITIONAL - SAME RATE				

90 GALLON CART SERVICE

MONTHLY RATES

90GWC	90G CART-CURB	\$ 45.05	2.10%	\$ 0.95	\$ 46.00
90GEC	90G CART EOW-CURB	\$ 29.27	2.10%	\$ 0.61	\$ 29.88
90GMC	90G CART OAM-CURB	\$ 15.76	2.10%	\$ 0.33	\$ 16.09
OC9C	90 GAL CART ON CALL CURB	\$ 15.76	2.10%	\$ 0.33	\$ 16.09
	EACH ADDITIONAL - SAME RATE				

Manzanita Commercial Rates

1.5 YARD CONTAINERS

MONTHLY RATES

1HGW	1.5YD TRASH	\$	189.28	2.10%	\$	3.97	\$	193.25
1HGE	1.5YD TRASH EOW	\$	108.08	2.10%	\$	2.27	\$	110.35
1HGM	1.5YD TRASH MONTHLY	\$	63.98	2.10%	\$	1.34	\$	65.32
1HOC	ON CALL-1.5YD TRASH	\$	41.24	2.10%	\$	0.87	\$	42.11
1HXP	EXTRA PICK UP-1.5YD TRASH	\$	41.24	2.10%	\$	0.87	\$	42.11

Discussion & Questions

Dan Blue (he, él)
Government Relations Manager

Recology | Proudly Employee Owned
C: 503-405-0261
E: dblue@recology.com